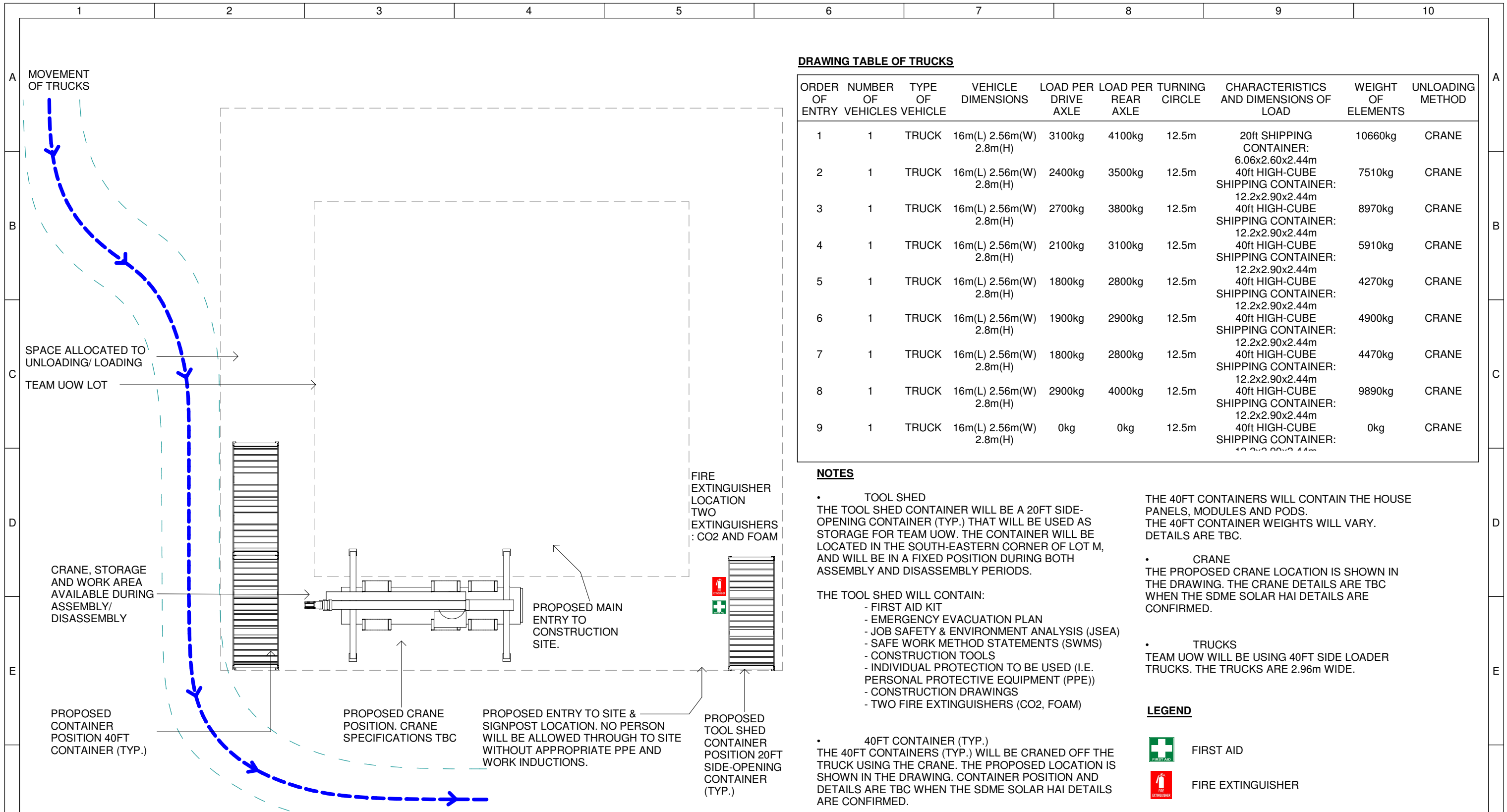


NOTES
 DETAILS OF SOLAR HAI - OUTSIDE LOGISTICS ARE TO BE CONFIRMED BY SOLAR DECATHLON MIDDLE EAST 2018 ORGANISERS.

--- PATH OF VEHICAL TRAFFIC BOTH INSIDE AND OUTSIDE OF SOLAR HAI

1 Solar Hai - Outside Logistics
 1 : 2000

	Team: TEAM UOW Address: UNIVERSITY OF WOLLONGONG WOLLONGONG NSW, AUSTRALIA 2522	Client: Dubai Electricity and Water Authority	AMENDMENTS			COPYRIGHT None; Project is Public		 NORTH	OUTSIDE LOGISTICS - SOLAR HAI																															
	Contact: sd-2018@uow.edu.au www.desertrosehouse.com.au		<table border="1"> <thead> <tr> <th>REV.</th> <th>DESCRIPTION</th> <th>DATE</th> <th>DRAWN</th> <th>CHECK</th> </tr> </thead> <tbody> <tr><td> </td><td> </td><td> </td><td> </td><td> </td></tr> <tr><td> </td><td> </td><td> </td><td> </td><td> </td></tr> <tr><td> </td><td> </td><td> </td><td> </td><td> </td></tr> <tr><td> </td><td> </td><td> </td><td> </td><td> </td></tr> </tbody> </table>	REV.	DESCRIPTION	DATE	DRAWN			CHECK																					<table border="1"> <tr> <td>LOT</td> <td># M</td> </tr> <tr> <td>DRAWER</td> <td>L. FAIDUTTI</td> </tr> <tr> <td>CHECKED</td> <td>C. MCDOWELL</td> </tr> <tr> <td>DATE</td> <td>20 February, 2018</td> </tr> <tr> <td>SCALE</td> <td>1 : 2000 @ A3</td> </tr> </table>	LOT	# M	DRAWER	L. FAIDUTTI	CHECKED	C. MCDOWELL	DATE	20 February, 2018	SCALE
REV.	DESCRIPTION	DATE	DRAWN	CHECK																																				
LOT	# M																																							
DRAWER	L. FAIDUTTI																																							
CHECKED	C. MCDOWELL																																							
DATE	20 February, 2018																																							
SCALE	1 : 2000 @ A3																																							



DRAWING TABLE OF TRUCKS

ORDER OF ENTRY	NUMBER OF VEHICLES	TYPE OF VEHICLE	VEHICLE DIMENSIONS	LOAD PER DRIVE AXLE	LOAD PER REAR AXLE	TURNING CIRCLE	CHARACTERISTICS AND DIMENSIONS OF LOAD	WEIGHT OF ELEMENTS	UNLOADING METHOD
1	1	TRUCK	16m(L) 2.56m(W) 2.8m(H)	3100kg	4100kg	12.5m	20ft SHIPPING CONTAINER: 6.06x2.60x2.44m	10660kg	CRANE
2	1	TRUCK	16m(L) 2.56m(W) 2.8m(H)	2400kg	3500kg	12.5m	40ft HIGH-CUBE SHIPPING CONTAINER: 12.2x2.90x2.44m	7510kg	CRANE
3	1	TRUCK	16m(L) 2.56m(W) 2.8m(H)	2700kg	3800kg	12.5m	40ft HIGH-CUBE SHIPPING CONTAINER: 12.2x2.90x2.44m	8970kg	CRANE
4	1	TRUCK	16m(L) 2.56m(W) 2.8m(H)	2100kg	3100kg	12.5m	40ft HIGH-CUBE SHIPPING CONTAINER: 12.2x2.90x2.44m	5910kg	CRANE
5	1	TRUCK	16m(L) 2.56m(W) 2.8m(H)	1800kg	2800kg	12.5m	40ft HIGH-CUBE SHIPPING CONTAINER: 12.2x2.90x2.44m	4270kg	CRANE
6	1	TRUCK	16m(L) 2.56m(W) 2.8m(H)	1900kg	2900kg	12.5m	40ft HIGH-CUBE SHIPPING CONTAINER: 12.2x2.90x2.44m	4900kg	CRANE
7	1	TRUCK	16m(L) 2.56m(W) 2.8m(H)	1800kg	2800kg	12.5m	40ft HIGH-CUBE SHIPPING CONTAINER: 12.2x2.90x2.44m	4470kg	CRANE
8	1	TRUCK	16m(L) 2.56m(W) 2.8m(H)	2900kg	4000kg	12.5m	40ft HIGH-CUBE SHIPPING CONTAINER: 12.2x2.90x2.44m	9890kg	CRANE
9	1	TRUCK	16m(L) 2.56m(W) 2.8m(H)	0kg	0kg	12.5m	40ft HIGH-CUBE SHIPPING CONTAINER: 12.2x2.90x2.44m	0kg	CRANE

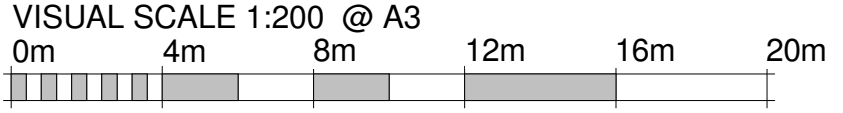
NOTES

- TOOL SHED**
THE TOOL SHED CONTAINER WILL BE A 20FT SIDE-OPENING CONTAINER (TYP.) THAT WILL BE USED AS STORAGE FOR TEAM UOW. THE CONTAINER WILL BE LOCATED IN THE SOUTH-EASTERN CORNER OF LOT M, AND WILL BE IN A FIXED POSITION DURING BOTH ASSEMBLY AND DISASSEMBLY PERIODS.
- THE TOOL SHED WILL CONTAIN:**
 - FIRST AID KIT
 - EMERGENCY EVACUATION PLAN
 - JOB SAFETY & ENVIRONMENT ANALYSIS (JSEA)
 - SAFE WORK METHOD STATEMENTS (SWMS)
 - CONSTRUCTION TOOLS
 - INDIVIDUAL PROTECTION TO BE USED (I.E. PERSONAL PROTECTIVE EQUIPMENT (PPE))
 - CONSTRUCTION DRAWINGS
 - TWO FIRE EXTINGUISHERS (CO2, FOAM)
- 40FT CONTAINER (TYP.)**
THE 40FT CONTAINERS (TYP.) WILL BE CRANED OFF THE TRUCK USING THE CRANE. THE PROPOSED LOCATION IS SHOWN IN THE DRAWING. CONTAINER POSITION AND DETAILS ARE TBC WHEN THE SDME SOLAR HAI DETAILS ARE CONFIRMED.
- CRANE**
THE PROPOSED CRANE LOCATION IS SHOWN IN THE DRAWING. THE CRANE DETAILS ARE TBC WHEN THE SDME SOLAR HAI DETAILS ARE CONFIRMED.
- TRUCKS**
TEAM UOW WILL BE USING 40FT SIDE LOADER TRUCKS. THE TRUCKS ARE 2.96m WIDE.
- THE 40FT CONTAINERS WILL CONTAIN THE HOUSE PANELS, MODULES AND PODS. THE 40FT CONTAINER WEIGHTS WILL VARY. DETAILS ARE TBC.**

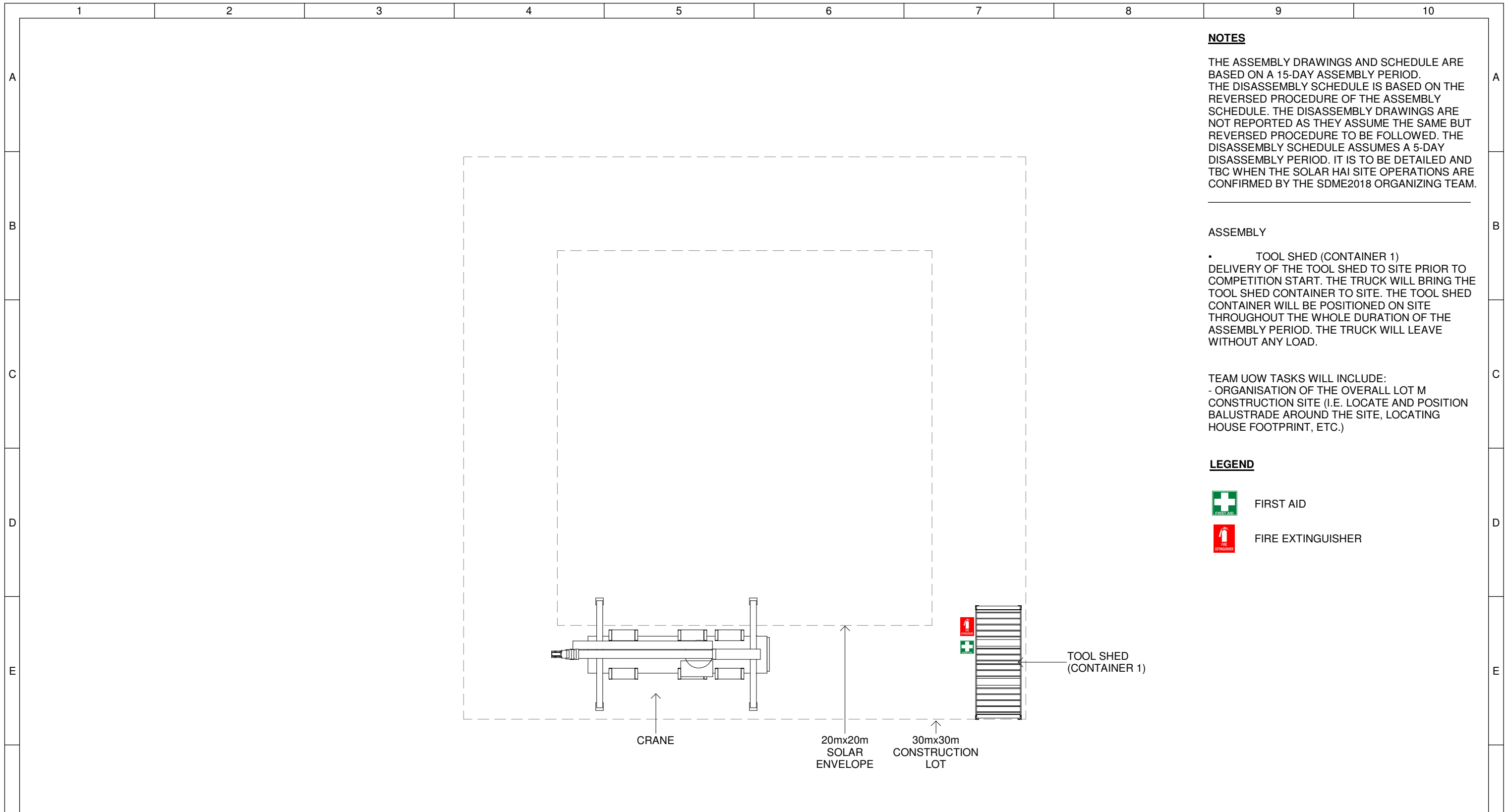
LEGEND

- FIRST AID
- FIRE EXTINGUISHER

1 Lot Inside Logistics
1 : 200



	Team: TEAM UOW Address: UNIVERSITY OF WOLLONGONG WOLLONGONG NSW, AUSTRALIA 2522 Contact: sd-2018@uow.edu.au www.desertrosehouse.com.au	Client: Dubai Electricity and Water Authority 	AMENDMENTS <table border="1"> <thead> <tr> <th>REV.</th> <th>DESCRIPTION</th> <th>DATE</th> <th>DRAWN</th> <th>CHECK</th> </tr> </thead> <tbody> <tr> <td>1</td> <td>Updated to As-Built</td> <td>14/09/18</td> <td>JR</td> <td>VP</td> </tr> </tbody> </table>	REV.	DESCRIPTION	DATE	DRAWN	CHECK	1	Updated to As-Built	14/09/18	JR	VP	COPYRIGHT None; Project is Public LOT # M DRAWER L.FAIDUTTI CHECKED C.MCDOWELL DATE 20 February, 2018 SCALE 1 : 200 @ A3	 NORTH LOT INSIDE LOGISTICS SHEET: 01 OF 01 SO-101
	REV.	DESCRIPTION	DATE	DRAWN	CHECK										
1	Updated to As-Built	14/09/18	JR	VP											



NOTES

THE ASSEMBLY DRAWINGS AND SCHEDULE ARE BASED ON A 15-DAY ASSEMBLY PERIOD. THE DISASSEMBLY SCHEDULE IS BASED ON THE REVERSED PROCEDURE OF THE ASSEMBLY SCHEDULE. THE DISASSEMBLY DRAWINGS ARE NOT REPORTED AS THEY ASSUME THE SAME BUT REVERSED PROCEDURE TO BE FOLLOWED. THE DISASSEMBLY SCHEDULE ASSUMES A 5-DAY DISASSEMBLY PERIOD. IT IS TO BE DETAILED AND TBC WHEN THE SOLAR HAI SITE OPERATIONS ARE CONFIRMED BY THE SDME2018 ORGANIZING TEAM.

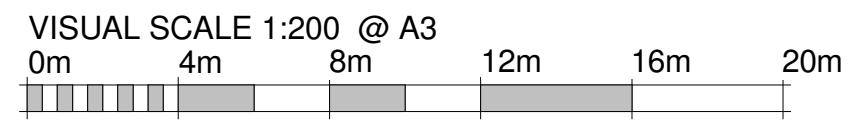
ASSEMBLY

- TOOL SHED (CONTAINER 1)
DELIVERY OF THE TOOL SHED TO SITE PRIOR TO COMPETITION START. THE TRUCK WILL BRING THE TOOL SHED CONTAINER TO SITE. THE TOOL SHED CONTAINER WILL BE POSITIONED ON SITE THROUGHOUT THE WHOLE DURATION OF THE ASSEMBLY PERIOD. THE TRUCK WILL LEAVE WITHOUT ANY LOAD.

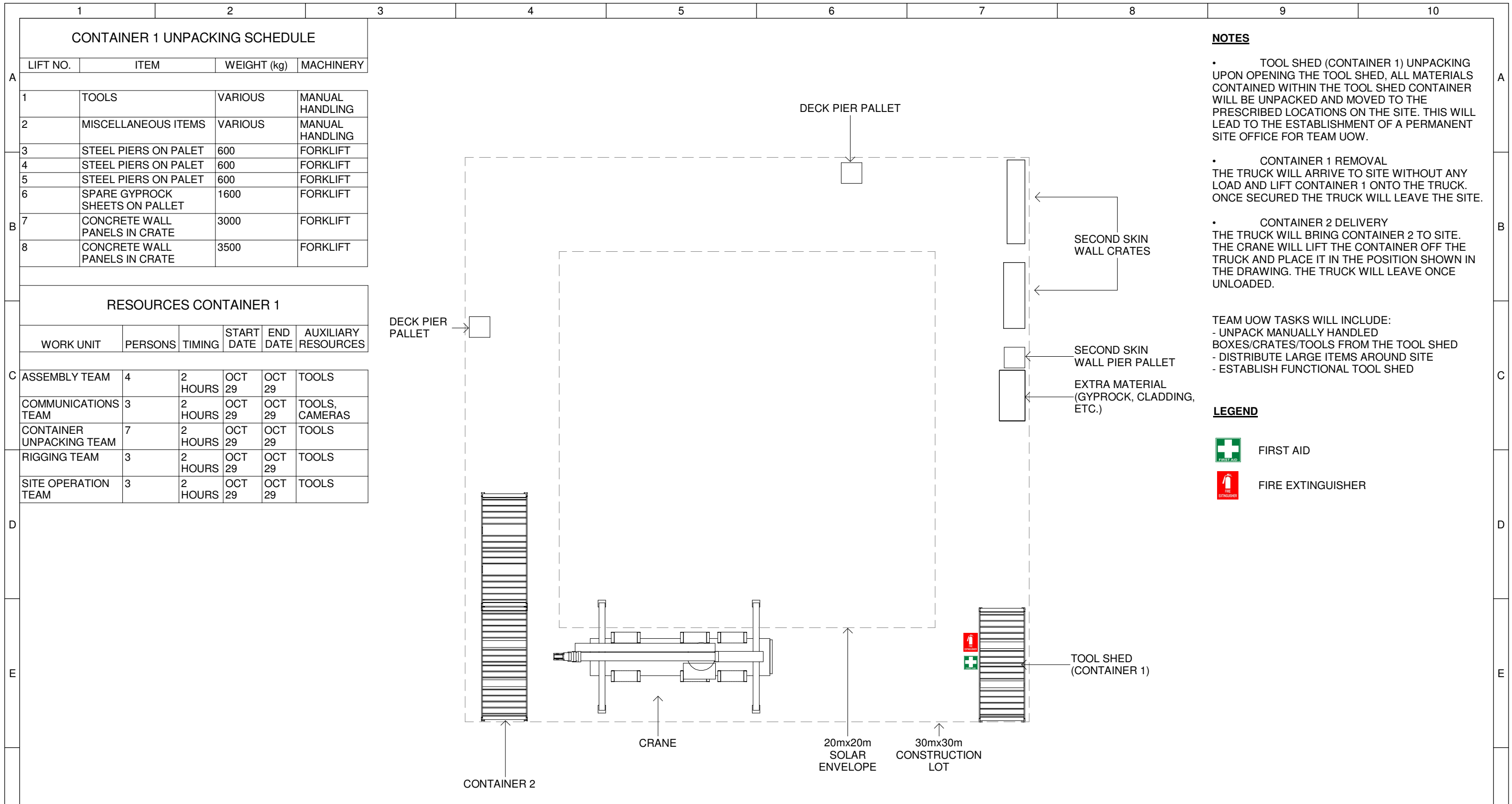
TEAM UOW TASKS WILL INCLUDE:
- ORGANISATION OF THE OVERALL LOT M CONSTRUCTION SITE (I.E. LOCATE AND POSITION BALUSTRADE AROUND THE SITE, LOCATING HOUSE FOOTPRINT, ETC.)

- LEGEND**
- FIRST AID
 - FIRE EXTINGUISHER

1 SO - Initial Site Layout
1 : 200



	Team: TEAM UOW Address: UNIVERSITY OF WOLLONGONG WOLLONGONG NSW, AUSTRALIA 2522	Client: Dubai Electricity and Water Authority 	AMENDMENTS				COPYRIGHT None; Project is Public			ASSEMBLY / DISASSEMBLY				
	Contact: sd-2018@uow.edu.au www.desertrosehouse.com.au		<table border="1"> <thead> <tr> <th>REV.</th> <th>DESCRIPTION</th> <th>DATE</th> <th>DRAWN</th> <th>CHECK</th> </tr> </thead> <tbody> <tr> <td>1</td> <td>Updated Detailing, Notes, and Layout</td> <td>15/09/1</td> <td>VP</td> <td>JR</td> </tr> </tbody> </table>	REV.	DESCRIPTION	DATE	DRAWN	CHECK			1	Updated Detailing, Notes, and Layout	15/09/1	VP
REV.	DESCRIPTION	DATE	DRAWN	CHECK										
1	Updated Detailing, Notes, and Layout	15/09/1	VP	JR										



- NOTES**
- TOOL SHED (CONTAINER 1) UNPACKING UPON OPENING THE TOOL SHED, ALL MATERIALS CONTAINED WITHIN THE TOOL SHED CONTAINER WILL BE UNPACKED AND MOVED TO THE PRESCRIBED LOCATIONS ON THE SITE. THIS WILL LEAD TO THE ESTABLISHMENT OF A PERMANENT SITE OFFICE FOR TEAM UOW.
 - CONTAINER 1 REMOVAL THE TRUCK WILL ARRIVE TO SITE WITHOUT ANY LOAD AND LIFT CONTAINER 1 ONTO THE TRUCK. ONCE SECURED THE TRUCK WILL LEAVE THE SITE.
 - CONTAINER 2 DELIVERY THE TRUCK WILL BRING CONTAINER 2 TO SITE. THE CRANE WILL LIFT THE CONTAINER OFF THE TRUCK AND PLACE IT IN THE POSITION SHOWN IN THE DRAWING. THE TRUCK WILL LEAVE ONCE UNLOADED.

- TEAM UOW TASKS WILL INCLUDE:
- UNPACK MANUALLY HANDLED BOXES/CRATES/TOOLS FROM THE TOOL SHED
 - DISTRIBUTE LARGE ITEMS AROUND SITE
 - ESTABLISH FUNCTIONAL TOOL SHED

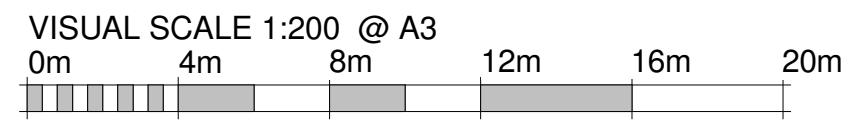
LEGEND

- FIRST AID
- FIRE EXTINGUISHER

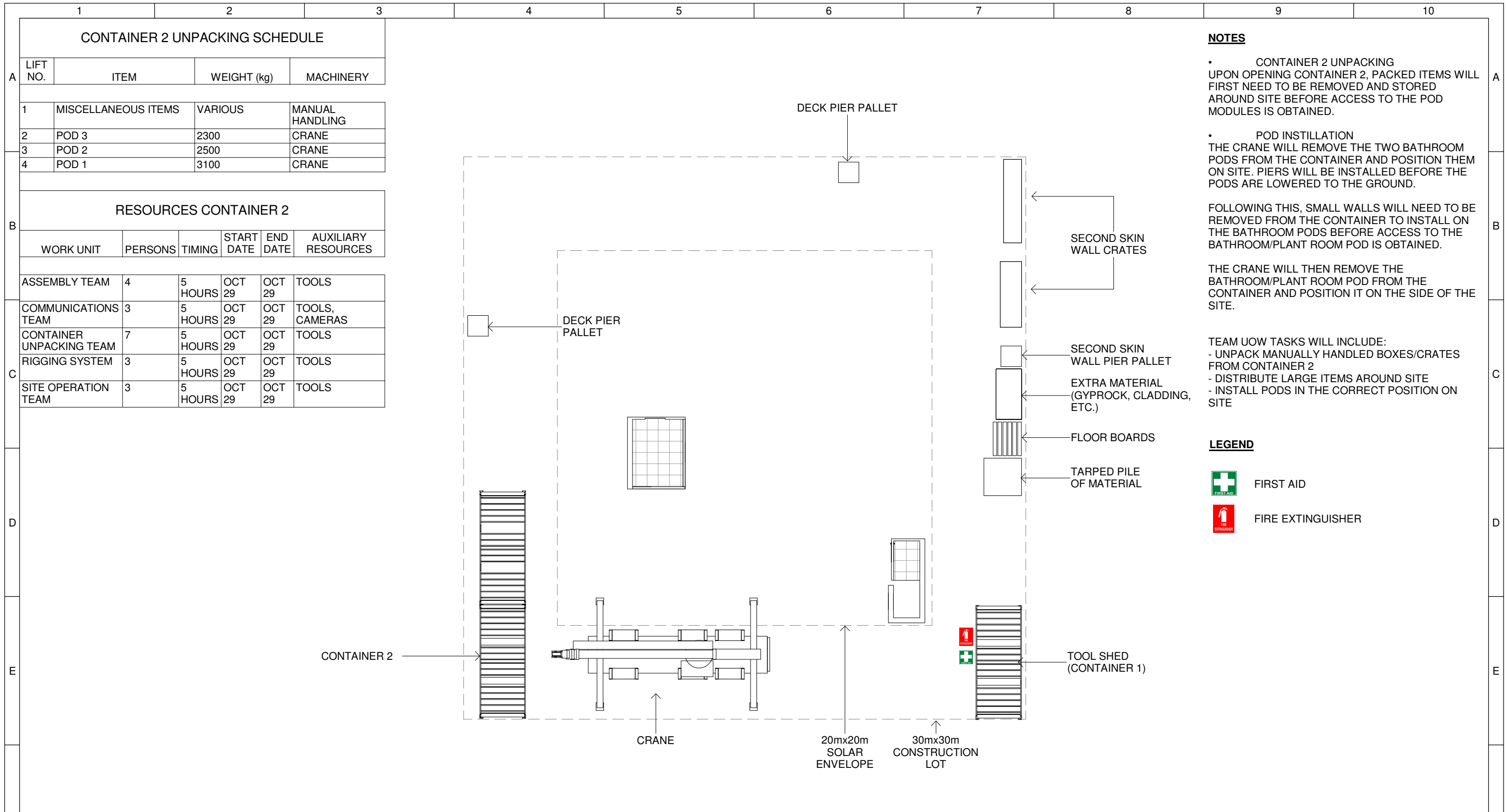
CONTAINER 1 UNPACKING SCHEDULE			
LIFT NO.	ITEM	WEIGHT (kg)	MACHINERY
1	TOOLS	VARIOUS	MANUAL HANDLING
2	MISCELLANEOUS ITEMS	VARIOUS	MANUAL HANDLING
3	STEEL PIERS ON PALET	600	FORKLIFT
4	STEEL PIERS ON PALET	600	FORKLIFT
5	STEEL PIERS ON PALET	600	FORKLIFT
6	SPARE GYPROCK SHEETS ON PALLET	1600	FORKLIFT
7	CONCRETE WALL PANELS IN CRATE	3000	FORKLIFT
8	CONCRETE WALL PANELS IN CRATE	3500	FORKLIFT

RESOURCES CONTAINER 1					
WORK UNIT	PERSONS	TIMING	START DATE	END DATE	AUXILIARY RESOURCES
ASSEMBLY TEAM	4	2 HOURS	OCT 29	OCT 29	TOOLS
COMMUNICATIONS TEAM	3	2 HOURS	OCT 29	OCT 29	TOOLS, CAMERAS
CONTAINER UNPACKING TEAM	7	2 HOURS	OCT 29	OCT 29	TOOLS
RIGGING TEAM	3	2 HOURS	OCT 29	OCT 29	TOOLS
SITE OPERATION TEAM	3	2 HOURS	OCT 29	OCT 29	TOOLS

1 SO - Container 1 Unpacking
1 : 200



	Team: TEAM UOW Address: UNIVERSITY OF WOLLONGONG WOLLONGONG NSW, AUSTRALIA 2522 Contact: sd-2018@uow.edu.au www.desertrosehouse.com.au	Client: Dubai Electricity and Water Authority 	AMENDMENTS <table border="1"> <thead> <tr> <th>REV.</th> <th>DESCRIPTION</th> <th>DATE</th> <th>DRAWN</th> <th>CHECK</th> </tr> </thead> <tbody> <tr> <td>1</td> <td>Updated Detailing, Notes, and Layout</td> <td>15/09/1</td> <td>VP</td> <td>JR</td> </tr> </tbody> </table>	REV.	DESCRIPTION	DATE	DRAWN	CHECK	1	Updated Detailing, Notes, and Layout	15/09/1	VP	JR	COPYRIGHT None; Project is Public LOT # M DRAWER L.FAIDUTTI CHECKED C.MCDOWELL DATE 20 February, 2018 SCALE 1 : 200 @ A3	 NORTH SHEET: 01 OF 01	ASSEMBLY / DISASSEMBLY <h1>SO-202</h1>
	REV.	DESCRIPTION	DATE	DRAWN	CHECK											
1	Updated Detailing, Notes, and Layout	15/09/1	VP	JR												
<p>1 2 3 4 5 6 7 8 9 10</p>																



NOTES

- CONTAINER 2 UNPACKING
UPON OPENING CONTAINER 2, PACKED ITEMS WILL FIRST NEED TO BE REMOVED AND STORED AROUND SITE BEFORE ACCESS TO THE POD MODULES IS OBTAINED.

- POD INSTALLATION
THE CRANE WILL REMOVE THE TWO BATHROOM PODS FROM THE CONTAINER AND POSITION THEM ON SITE. PIERS WILL BE INSTALLED BEFORE THE PODS ARE LOWERED TO THE GROUND.

FOLLOWING THIS, SMALL WALLS WILL NEED TO BE REMOVED FROM THE CONTAINER TO INSTALL ON THE BATHROOM PODS BEFORE ACCESS TO THE BATHROOM/PLANT ROOM POD IS OBTAINED.

THE CRANE WILL THEN REMOVE THE BATHROOM/PLANT ROOM POD FROM THE CONTAINER AND POSITION IT ON THE SIDE OF THE SITE.

TEAM UOW TASKS WILL INCLUDE:
 - UNPACK MANUALLY HANDLED BOXES/CRATES FROM CONTAINER 2
 - DISTRIBUTE LARGE ITEMS AROUND SITE
 - INSTALL PODS IN THE CORRECT POSITION ON SITE

LEGEND



FIRST AID

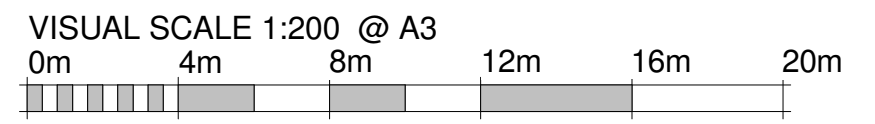


FIRE EXTINGUISHER

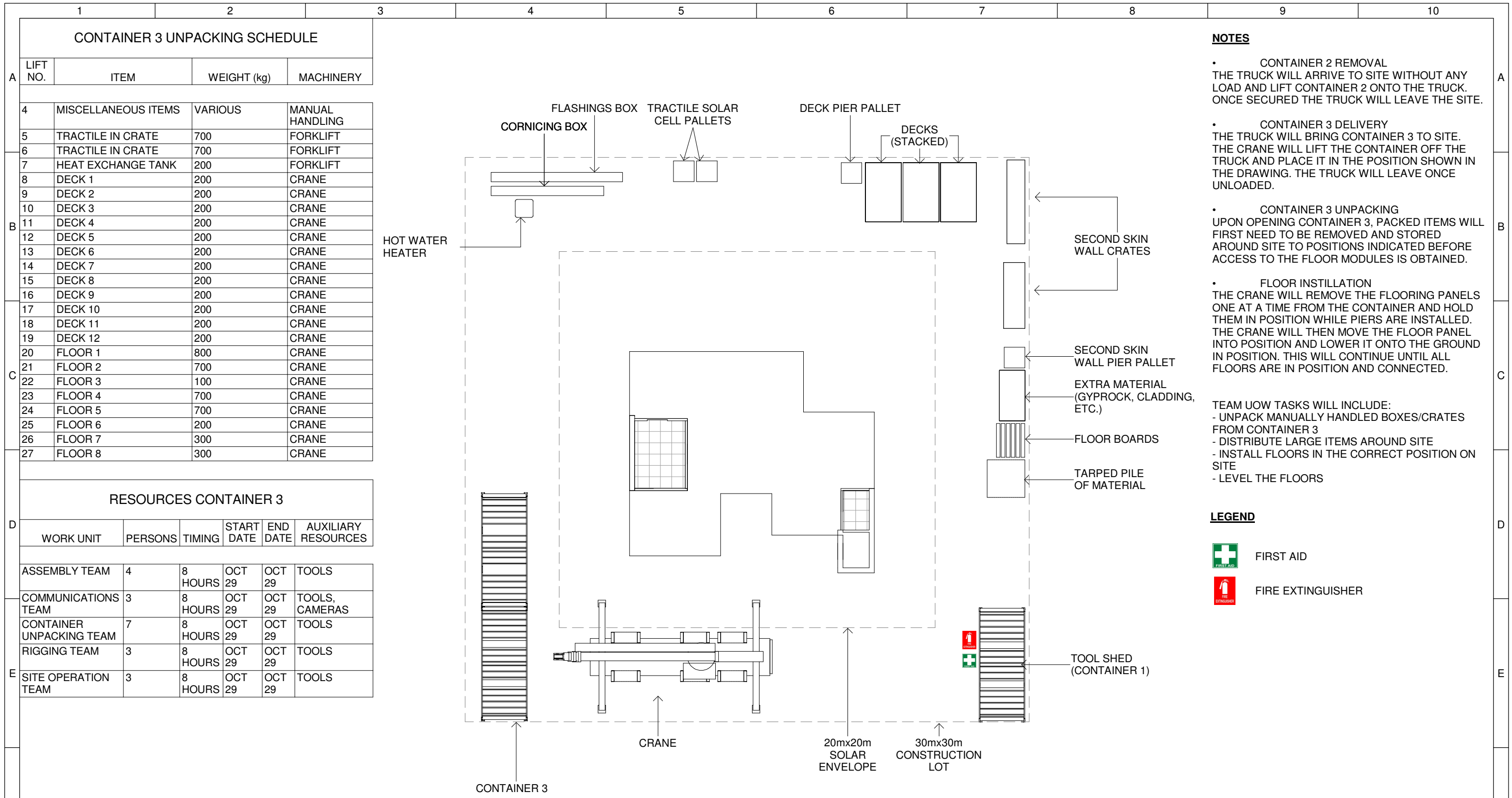
CONTAINER 2 UNPACKING SCHEDULE			
LIFT NO.	ITEM	WEIGHT (kg)	MACHINERY
1	MISCELLANEOUS ITEMS	VARIOUS	MANUAL HANDLING
2	POD 3	2300	CRANE
3	POD 2	2500	CRANE
4	POD 1	3100	CRANE

RESOURCES CONTAINER 2					
WORK UNIT	PERSONS	TIMING	START DATE	END DATE	AUXILIARY RESOURCES
ASSEMBLY TEAM	4	5 HOURS	OCT 29	OCT 29	TOOLS
COMMUNICATIONS TEAM	3	5 HOURS	OCT 29	OCT 29	TOOLS, CAMERAS
CONTAINER UNPACKING TEAM	7	5 HOURS	OCT 29	OCT 29	TOOLS
RIGGING SYSTEM	3	5 HOURS	OCT 29	OCT 29	TOOLS
SITE OPERATION TEAM	3	5 HOURS	OCT 29	OCT 29	TOOLS

1 SO - Pod Assembly
1 : 200



	Team: TEAM UOW Address: UNIVERSITY OF WOLLONGONG WOLLONGONG NSW, AUSTRALIA 2522 Contact: sd-2018@uow.edu.au www.desertrosehouse.com.au	Client: Dubai Electricity and Water Authority 	AMENDMENTS <table border="1"> <thead> <tr> <th>REV.</th> <th>DESCRIPTION</th> <th>DATE</th> <th>DRAWN</th> <th>CHECK</th> </tr> </thead> <tbody> <tr> <td>1</td> <td>Updated Detailing, Notes, and Layout</td> <td>15/09/1</td> <td>VP</td> <td>JR</td> </tr> </tbody> </table>	REV.	DESCRIPTION	DATE	DRAWN	CHECK	1	Updated Detailing, Notes, and Layout	15/09/1	VP	JR	COPYRIGHT None; Project is Public LOT # M DRAWER L.FAIDUTTI CHECKED C.MCDOWELL DATE 20 February, 2018 SCALE 1 : 200 @ A3	 NORTH ASSEMBLY / DISASSEMBLY SHEET: 01 OF 01 SO-203
	REV.	DESCRIPTION	DATE	DRAWN	CHECK										
1	Updated Detailing, Notes, and Layout	15/09/1	VP	JR											



- NOTES**
- CONTAINER 2 REMOVAL
THE TRUCK WILL ARRIVE TO SITE WITHOUT ANY LOAD AND LIFT CONTAINER 2 ONTO THE TRUCK. ONCE SECURED THE TRUCK WILL LEAVE THE SITE.
 - CONTAINER 3 DELIVERY
THE TRUCK WILL BRING CONTAINER 3 TO SITE. THE CRANE WILL LIFT THE CONTAINER OFF THE TRUCK AND PLACE IT IN THE POSITION SHOWN IN THE DRAWING. THE TRUCK WILL LEAVE ONCE UNLOADED.
 - CONTAINER 3 UNPACKING
UPON OPENING CONTAINER 3, PACKED ITEMS WILL FIRST NEED TO BE REMOVED AND STORED AROUND SITE TO POSITIONS INDICATED BEFORE ACCESS TO THE FLOOR MODULES IS OBTAINED.
 - FLOOR INSTALLATION
THE CRANE WILL REMOVE THE FLOORING PANELS ONE AT A TIME FROM THE CONTAINER AND HOLD THEM IN POSITION WHILE PIERS ARE INSTALLED. THE CRANE WILL THEN MOVE THE FLOOR PANEL INTO POSITION AND LOWER IT ONTO THE GROUND IN POSITION. THIS WILL CONTINUE UNTIL ALL FLOORS ARE IN POSITION AND CONNECTED.

- TEAM UOW TASKS WILL INCLUDE:
- UNPACK MANUALLY HANDLED BOXES/CRATES FROM CONTAINER 3
 - DISTRIBUTE LARGE ITEMS AROUND SITE
 - INSTALL FLOORS IN THE CORRECT POSITION ON SITE
 - LEVEL THE FLOORS

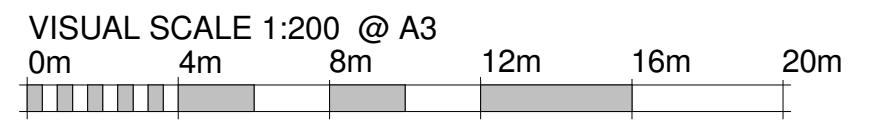
- LEGEND**
- FIRST AID
 - FIRE EXTINGUISHER

CONTAINER 3 UNPACKING SCHEDULE			
LIFT NO.	ITEM	WEIGHT (kg)	MACHINERY
4	MISCELLANEOUS ITEMS	VARIOUS	MANUAL HANDLING
5	TRACTILE IN CRATE	700	FORKLIFT
6	TRACTILE IN CRATE	700	FORKLIFT
7	HEAT EXCHANGE TANK	200	FORKLIFT
8	DECK 1	200	CRANE
9	DECK 2	200	CRANE
10	DECK 3	200	CRANE
11	DECK 4	200	CRANE
12	DECK 5	200	CRANE
13	DECK 6	200	CRANE
14	DECK 7	200	CRANE
15	DECK 8	200	CRANE
16	DECK 9	200	CRANE
17	DECK 10	200	CRANE
18	DECK 11	200	CRANE
19	DECK 12	200	CRANE
20	FLOOR 1	800	CRANE
21	FLOOR 2	700	CRANE
22	FLOOR 3	100	CRANE
23	FLOOR 4	700	CRANE
24	FLOOR 5	700	CRANE
25	FLOOR 6	200	CRANE
26	FLOOR 7	300	CRANE
27	FLOOR 8	300	CRANE

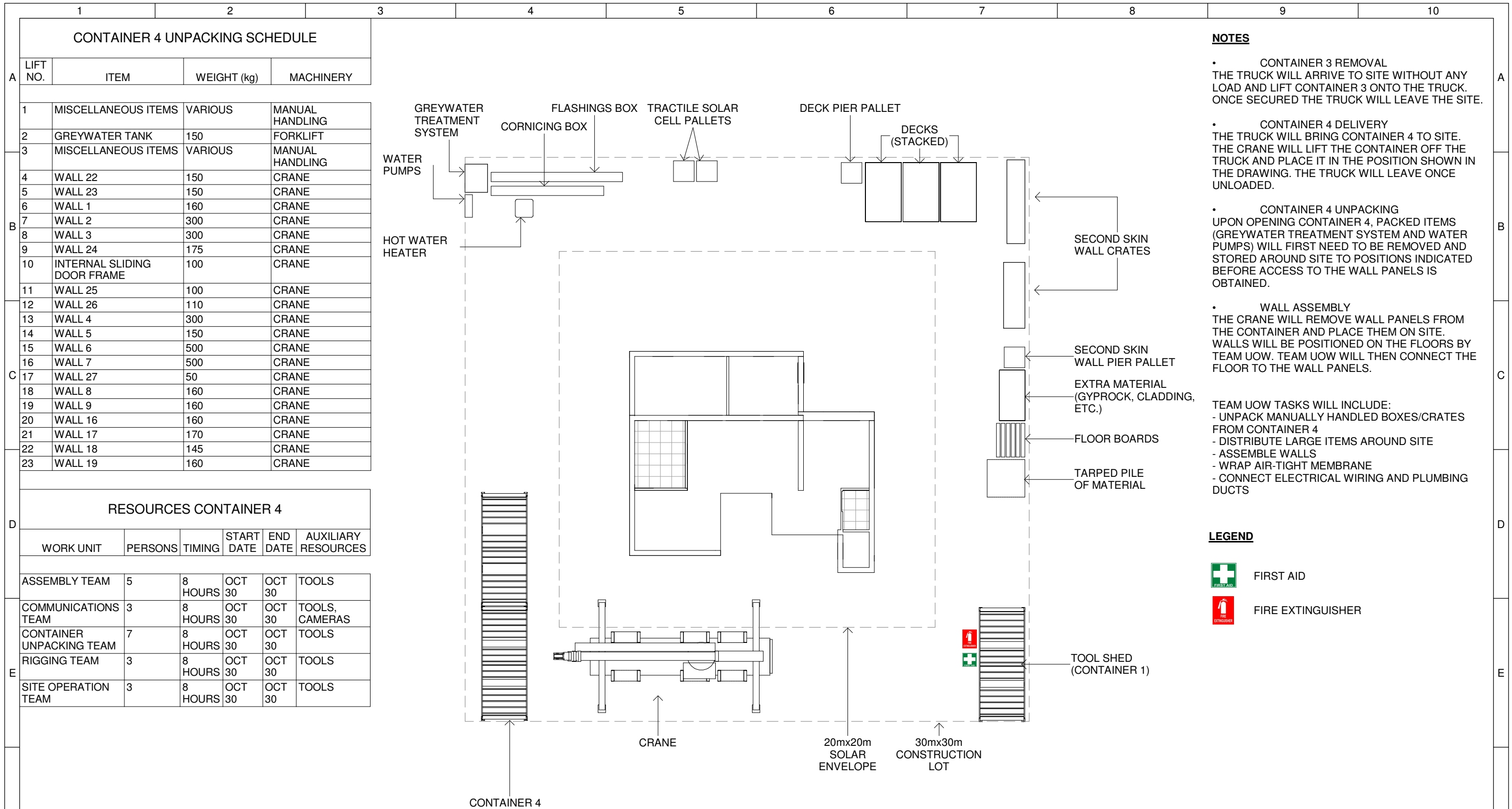
RESOURCES CONTAINER 3					
WORK UNIT	PERSONS	TIMING	START DATE	END DATE	AUXILIARY RESOURCES
ASSEMBLY TEAM	4	8 HOURS	OCT 29	OCT 29	TOOLS
COMMUNICATIONS TEAM	3	8 HOURS	OCT 29	OCT 29	TOOLS, CAMERAS
CONTAINER UNPACKING TEAM	7	8 HOURS	OCT 29	OCT 29	TOOLS
RIGGING TEAM	3	8 HOURS	OCT 29	OCT 29	TOOLS
SITE OPERATION TEAM	3	8 HOURS	OCT 29	OCT 29	TOOLS

1 SO - Floor Assembly

1 : 200



	Team: TEAM UOW Address: UNIVERSITY OF WOLLONGONG WOLLONGONG NSW, AUSTRALIA 2522 Contact: sd-2018@uow.edu.au www.desertrosehouse.com.au	Client: Dubai Electricity and Water Authority 	AMENDMENTS <table border="1"> <thead> <tr> <th>REV.</th> <th>DESCRIPTION</th> <th>DATE</th> <th>DRAWN</th> <th>CHECK</th> </tr> </thead> <tbody> <tr> <td>1</td> <td>Updated Detailing, Notes, and Layout</td> <td>15/09/1</td> <td>VP</td> <td>JR</td> </tr> </tbody> </table>	REV.	DESCRIPTION	DATE	DRAWN	CHECK	1	Updated Detailing, Notes, and Layout	15/09/1	VP	JR	COPYRIGHT None; Project is Public DRAWER L.FAIDUTTI CHECKED C.MCDOWELL DATE 20 February, 2018 SCALE 1 : 200 @ A3	 NORTH ASSEMBLY / DISASSEMBLY SHEET: 01 OF 01 <h1>SO-204</h1>
	REV.	DESCRIPTION	DATE	DRAWN	CHECK										
1	Updated Detailing, Notes, and Layout	15/09/1	VP	JR											



NOTES

- CONTAINER 3 REMOVAL
THE TRUCK WILL ARRIVE TO SITE WITHOUT ANY LOAD AND LIFT CONTAINER 3 ONTO THE TRUCK. ONCE SECURED THE TRUCK WILL LEAVE THE SITE.
- CONTAINER 4 DELIVERY
THE TRUCK WILL BRING CONTAINER 4 TO SITE. THE CRANE WILL LIFT THE CONTAINER OFF THE TRUCK AND PLACE IT IN THE POSITION SHOWN IN THE DRAWING. THE TRUCK WILL LEAVE ONCE UNLOADED.
- CONTAINER 4 UNPACKING
UPON OPENING CONTAINER 4, PACKED ITEMS (GREY WATER TREATMENT SYSTEM AND WATER PUMPS) WILL FIRST NEED TO BE REMOVED AND STORED AROUND SITE TO POSITIONS INDICATED BEFORE ACCESS TO THE WALL PANELS IS OBTAINED.
- WALL ASSEMBLY
THE CRANE WILL REMOVE WALL PANELS FROM THE CONTAINER AND PLACE THEM ON SITE. WALLS WILL BE POSITIONED ON THE FLOORS BY TEAM UOW. TEAM UOW WILL THEN CONNECT THE FLOOR TO THE WALL PANELS.

TEAM UOW TASKS WILL INCLUDE:

- UNPACK MANUALLY HANDLED BOXES/CRATES FROM CONTAINER 4
- DISTRIBUTE LARGE ITEMS AROUND SITE
- ASSEMBLE WALLS
- WRAP AIR-TIGHT MEMBRANE
- CONNECT ELECTRICAL WIRING AND PLUMBING DUCTS

LEGEND

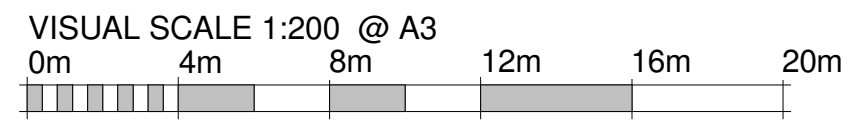
- FIRST AID
- FIRE EXTINGUISHER

CONTAINER 4 UNPACKING SCHEDULE			
LIFT NO.	ITEM	WEIGHT (kg)	MACHINERY
1	MISCELLANEOUS ITEMS	VARIOUS	MANUAL HANDLING
2	GREY WATER TANK	150	FORKLIFT
3	MISCELLANEOUS ITEMS	VARIOUS	MANUAL HANDLING
4	WALL 22	150	CRANE
5	WALL 23	150	CRANE
6	WALL 1	160	CRANE
7	WALL 2	300	CRANE
8	WALL 3	300	CRANE
9	WALL 24	175	CRANE
10	INTERNAL SLIDING DOOR FRAME	100	CRANE
11	WALL 25	100	CRANE
12	WALL 26	110	CRANE
13	WALL 4	300	CRANE
14	WALL 5	150	CRANE
15	WALL 6	500	CRANE
16	WALL 7	500	CRANE
17	WALL 27	50	CRANE
18	WALL 8	160	CRANE
19	WALL 9	160	CRANE
20	WALL 16	160	CRANE
21	WALL 17	170	CRANE
22	WALL 18	145	CRANE
23	WALL 19	160	CRANE

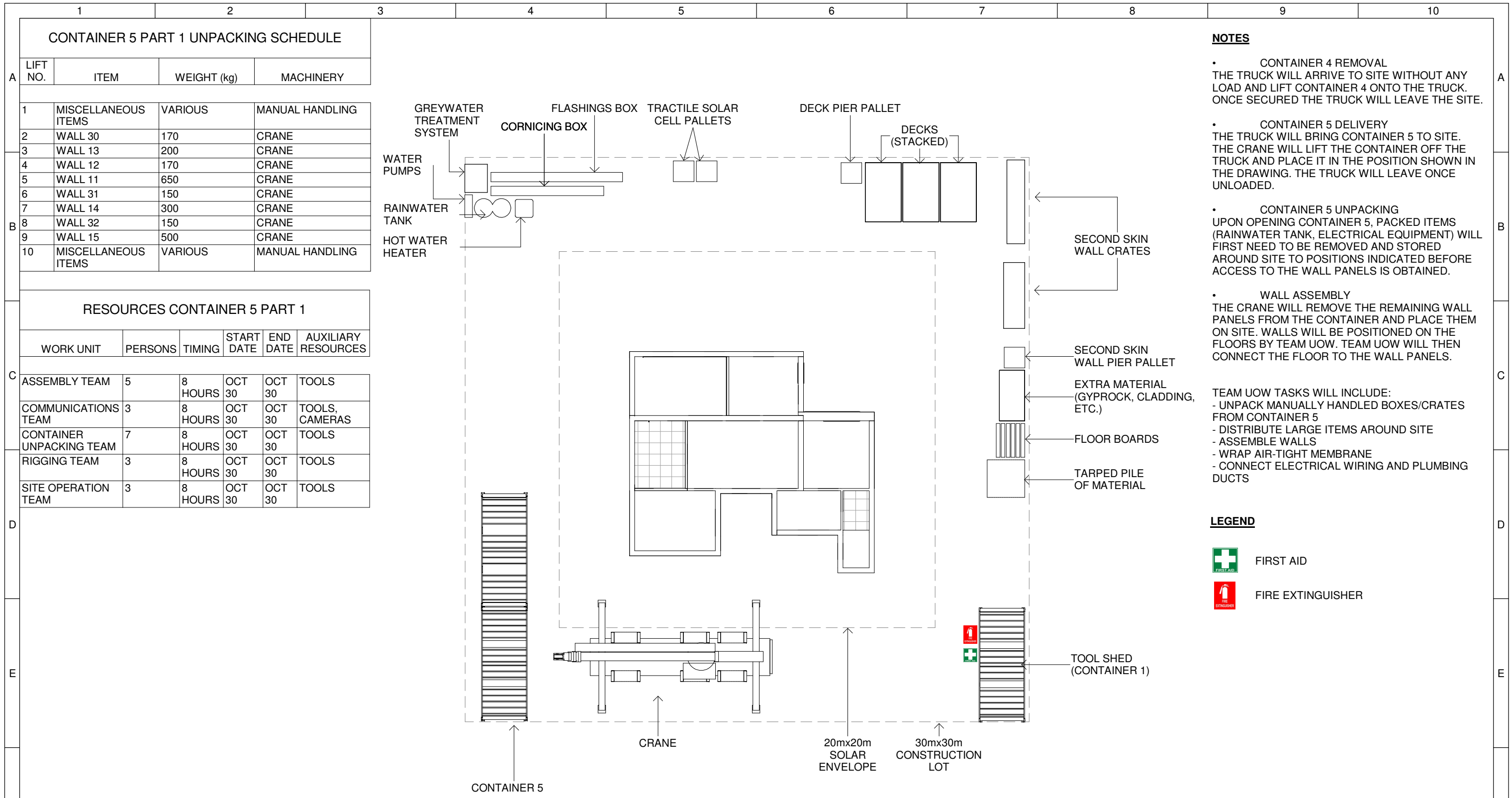
RESOURCES CONTAINER 4					
WORK UNIT	PERSONS	TIMING	START DATE	END DATE	AUXILIARY RESOURCES
ASSEMBLY TEAM	5	8 HOURS	OCT 30	OCT 30	TOOLS
COMMUNICATIONS TEAM	3	8 HOURS	OCT 30	OCT 30	TOOLS, CAMERAS
CONTAINER UNPACKING TEAM	7	8 HOURS	OCT 30	OCT 30	TOOLS
RIGGING TEAM	3	8 HOURS	OCT 30	OCT 30	TOOLS
SITE OPERATION TEAM	3	8 HOURS	OCT 30	OCT 30	TOOLS

1 SO - Wall Assembly (Part 1)

1 : 200



	Team: TEAM UOW Address: UNIVERSITY OF WOLLONGONG WOLLONGONG NSW, AUSTRALIA 2522 Contact: sd-2018@uow.edu.au www.desertrosehouse.com.au	Client: Dubai Electricity and Water Authority 	AMENDMENTS <table border="1"> <thead> <tr> <th>REV.</th> <th>DESCRIPTION</th> <th>DATE</th> <th>DRAWN</th> <th>CHECK</th> </tr> </thead> <tbody> <tr> <td>1</td> <td>Updated Detailing, Notes, and Layout</td> <td>15/09/1</td> <td>VP</td> <td>JR</td> </tr> </tbody> </table>	REV.	DESCRIPTION	DATE	DRAWN	CHECK	1	Updated Detailing, Notes, and Layout	15/09/1	VP	JR	COPYRIGHT None; Project is Public DRAWER L.FAIDUTTI CHECKED C.MCDOWELL DATE 20 February, 2018 SCALE 1 : 200 @ A3	 NORTH SHEET: 01 OF 01	ASSEMBLY / DISASSEMBLY <h2>SO-205</h2>
	REV.	DESCRIPTION	DATE	DRAWN	CHECK											
1	Updated Detailing, Notes, and Layout	15/09/1	VP	JR												
1	2	3	4	5	6	7	8	9	10							



NOTES

- CONTAINER 4 REMOVAL
THE TRUCK WILL ARRIVE TO SITE WITHOUT ANY LOAD AND LIFT CONTAINER 4 ONTO THE TRUCK. ONCE SECURED THE TRUCK WILL LEAVE THE SITE.
- CONTAINER 5 DELIVERY
THE TRUCK WILL BRING CONTAINER 5 TO SITE. THE CRANE WILL LIFT THE CONTAINER OFF THE TRUCK AND PLACE IT IN THE POSITION SHOWN IN THE DRAWING. THE TRUCK WILL LEAVE ONCE UNLOADED.
- CONTAINER 5 UNPACKING
UPON OPENING CONTAINER 5, PACKED ITEMS (RAINWATER TANK, ELECTRICAL EQUIPMENT) WILL FIRST NEED TO BE REMOVED AND STORED AROUND SITE TO POSITIONS INDICATED BEFORE ACCESS TO THE WALL PANELS IS OBTAINED.
- WALL ASSEMBLY
THE CRANE WILL REMOVE THE REMAINING WALL PANELS FROM THE CONTAINER AND PLACE THEM ON SITE. WALLS WILL BE POSITIONED ON THE FLOORS BY TEAM UOW. TEAM UOW WILL THEN CONNECT THE FLOOR TO THE WALL PANELS.

TEAM UOW TASKS WILL INCLUDE:

- UNPACK MANUALLY HANDLED BOXES/CRATES FROM CONTAINER 5
- DISTRIBUTE LARGE ITEMS AROUND SITE
- ASSEMBLE WALLS
- WRAP AIR-TIGHT MEMBRANE
- CONNECT ELECTRICAL WIRING AND PLUMBING DUCTS

LEGEND

- FIRST AID
- FIRE EXTINGUISHER

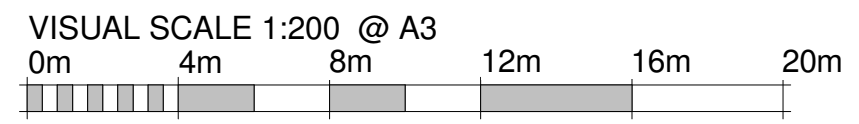
CONTAINER 5 PART 1 UNPACKING SCHEDULE

LIFT NO.	ITEM	WEIGHT (kg)	MACHINERY
1	MISCELLANEOUS ITEMS	VARIOUS	MANUAL HANDLING
2	WALL 30	170	CRANE
3	WALL 13	200	CRANE
4	WALL 12	170	CRANE
5	WALL 11	650	CRANE
6	WALL 31	150	CRANE
7	WALL 14	300	CRANE
8	WALL 32	150	CRANE
9	WALL 15	500	CRANE
10	MISCELLANEOUS ITEMS	VARIOUS	MANUAL HANDLING

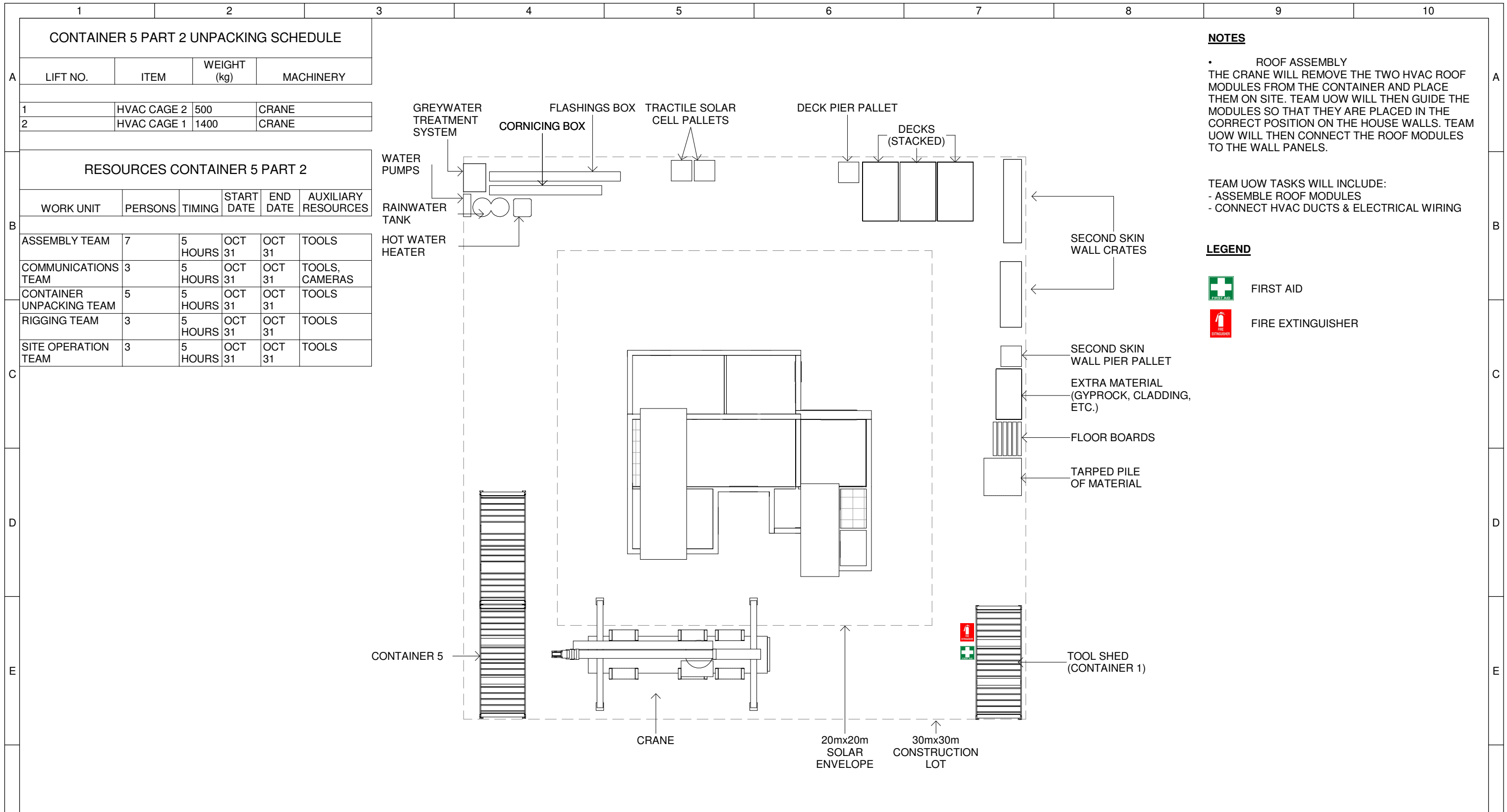
RESOURCES CONTAINER 5 PART 1

WORK UNIT	PERSONS	TIMING	START DATE	END DATE	AUXILIARY RESOURCES
ASSEMBLY TEAM	5	8 HOURS	OCT 30	OCT 30	TOOLS
COMMUNICATIONS TEAM	3	8 HOURS	OCT 30	OCT 30	TOOLS, CAMERAS
CONTAINER UNPACKING TEAM	7	8 HOURS	OCT 30	OCT 30	TOOLS
RIGGING TEAM	3	8 HOURS	OCT 30	OCT 30	TOOLS
SITE OPERATION TEAM	3	8 HOURS	OCT 30	OCT 30	TOOLS

1 SO - Wall Assembly (Part 2)
1 : 200



	Team: TEAM UOW Address: UNIVERSITY OF WOLLONGONG WOLLONGONG NSW, AUSTRALIA 2522 Contact: sd-2018@uow.edu.au www.desertrosehouse.com.au	Client: Dubai Electricity and Water Authority 	AMENDMENTS <table border="1"> <thead> <tr> <th>REV.</th> <th>DESCRIPTION</th> <th>DATE</th> <th>DRAWN</th> <th>CHECK</th> </tr> </thead> <tbody> <tr> <td>1</td> <td>Updated Detailing, Notes, and Layout</td> <td>15/09/1</td> <td>VP</td> <td>JR</td> </tr> </tbody> </table>	REV.	DESCRIPTION	DATE	DRAWN	CHECK	1	Updated Detailing, Notes, and Layout	15/09/1	VP	JR	COPYRIGHT None; Project is Public DRAWER L.FAIDUTTI CHECKED C.MCDOWELL DATE 20 February, 2018 SCALE 1 : 200 @ A3	 NORTH ASSEMBLY / DISASSEMBLY SHEET: 01 OF 01 SO-206
	REV.	DESCRIPTION	DATE	DRAWN	CHECK										
1	Updated Detailing, Notes, and Layout	15/09/1	VP	JR											



NOTES

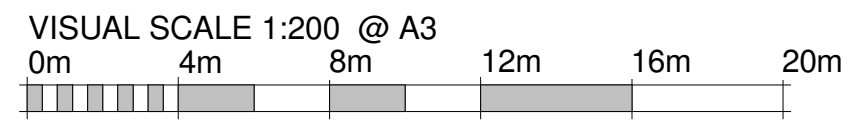
- **ROOF ASSEMBLY**
THE CRANE WILL REMOVE THE TWO HVAC ROOF MODULES FROM THE CONTAINER AND PLACE THEM ON SITE. TEAM UOW WILL THEN GUIDE THE MODULES SO THAT THEY ARE PLACED IN THE CORRECT POSITION ON THE HOUSE WALLS. TEAM UOW WILL THEN CONNECT THE ROOF MODULES TO THE WALL PANELS.

TEAM UOW TASKS WILL INCLUDE:
 - ASSEMBLE ROOF MODULES
 - CONNECT HVAC DUCTS & ELECTRICAL WIRING

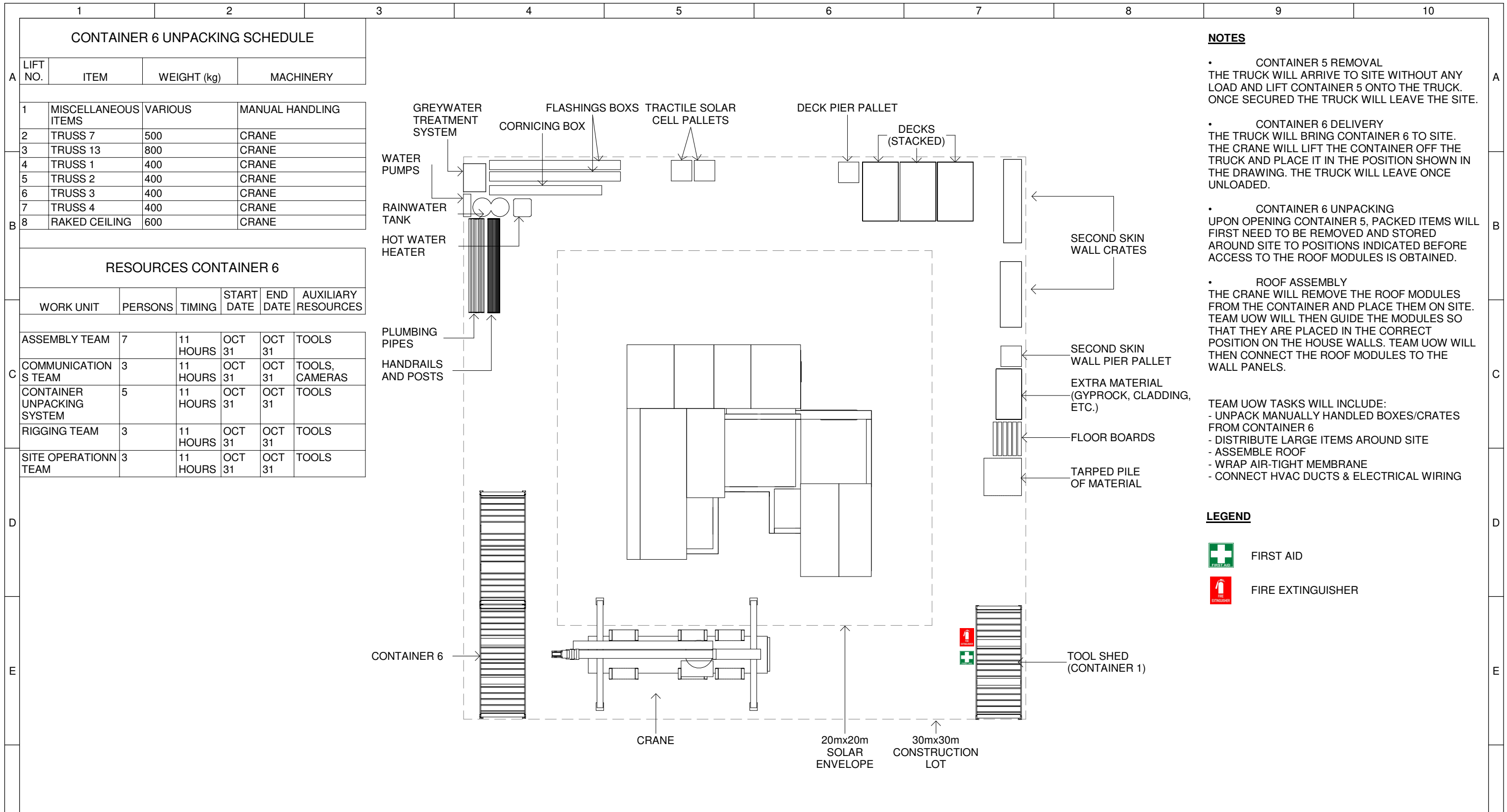
LEGEND

- FIRST AID
- FIRE EXTINGUISHER

1 SO - Roof Assembly (Part 1)
 1 : 200



	Team: TEAM UOW Address: UNIVERSITY OF WOLLONGONG WOLLONGONG NSW, AUSTRALIA 2522 Contact: sd-2018@uow.edu.au www.desertrosehouse.com.au	Client: Dubai Electricity and Water Authority 	AMENDMENTS <table border="1"> <thead> <tr> <th>REV.</th> <th>DESCRIPTION</th> <th>DATE</th> <th>DRAWN</th> <th>CHECK</th> </tr> </thead> <tbody> <tr> <td>1</td> <td>Updated Detailing, Notes, and Layout</td> <td>15/09/1</td> <td>VP</td> <td>JR</td> </tr> </tbody> </table>	REV.	DESCRIPTION	DATE	DRAWN	CHECK	1	Updated Detailing, Notes, and Layout	15/09/1	VP	JR	COPYRIGHT None; Project is Public LOT # M DRAWER L.FAIDUTTI CHECKED C.MCDOWELL DATE 20 February, 2018 SCALE 1 : 200 @ A3	 NORTH ASSEMBLY / DISASSEMBLY SHEET: 01 OF 01 SO-207
	REV.	DESCRIPTION	DATE	DRAWN	CHECK										
1	Updated Detailing, Notes, and Layout	15/09/1	VP	JR											
<p>1 2 3 4 5 6 7 8 9 10</p>															

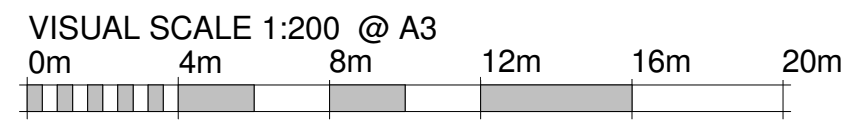


- NOTES**
- CONTAINER 5 REMOVAL
THE TRUCK WILL ARRIVE TO SITE WITHOUT ANY LOAD AND LIFT CONTAINER 5 ONTO THE TRUCK. ONCE SECURED THE TRUCK WILL LEAVE THE SITE.
 - CONTAINER 6 DELIVERY
THE TRUCK WILL BRING CONTAINER 6 TO SITE. THE CRANE WILL LIFT THE CONTAINER OFF THE TRUCK AND PLACE IT IN THE POSITION SHOWN IN THE DRAWING. THE TRUCK WILL LEAVE ONCE UNLOADED.
 - CONTAINER 6 UNPACKING
UPON OPENING CONTAINER 5, PACKED ITEMS WILL FIRST NEED TO BE REMOVED AND STORED AROUND SITE TO POSITIONS INDICATED BEFORE ACCESS TO THE ROOF MODULES IS OBTAINED.
 - ROOF ASSEMBLY
THE CRANE WILL REMOVE THE ROOF MODULES FROM THE CONTAINER AND PLACE THEM ON SITE. TEAM UOW WILL THEN GUIDE THE MODULES SO THAT THEY ARE PLACED IN THE CORRECT POSITION ON THE HOUSE WALLS. TEAM UOW WILL THEN CONNECT THE ROOF MODULES TO THE WALL PANELS.
- TEAM UOW TASKS WILL INCLUDE:
- UNPACK MANUALLY HANDLED BOXES/CRATES FROM CONTAINER 6
 - DISTRIBUTE LARGE ITEMS AROUND SITE
 - ASSEMBLE ROOF
 - WRAP AIR-TIGHT MEMBRANE
 - CONNECT HVAC DUCTS & ELECTRICAL WIRING

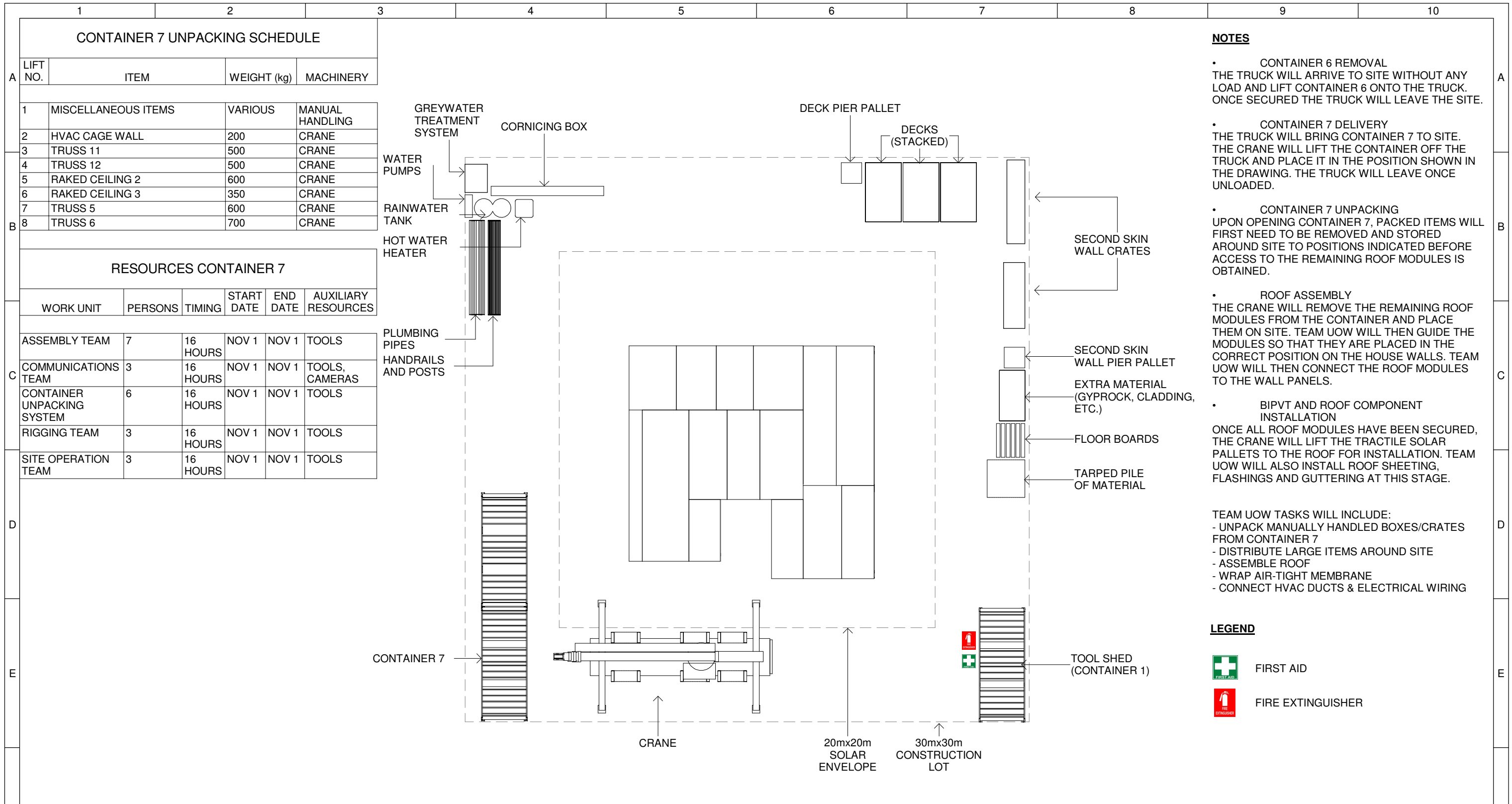
- LEGEND**
- FIRST AID
 - FIRE EXTINGUISHER

SO - Roof Assembly (Part 2)

1 : 200



	Team: TEAM UOW Address: UNIVERSITY OF WOLLONGONG WOLLONGONG NSW, AUSTRALIA 2522 Contact: sd-2018@uow.edu.au www.desertrosehouse.com.au	Client: Dubai Electricity and Water Authority 	AMENDMENTS <table border="1"> <thead> <tr> <th>REV.</th> <th>DESCRIPTION</th> <th>DATE</th> <th>DRAWN</th> <th>CHECK</th> </tr> </thead> <tbody> <tr> <td>1</td> <td>Editing Layout</td> <td>08/09/18</td> <td>VP</td> <td>JR</td> </tr> </tbody> </table>	REV.	DESCRIPTION	DATE	DRAWN	CHECK	1	Editing Layout	08/09/18	VP	JR	COPYRIGHT None; Project is Public DRAWER L.FAIDUTTI CHECKED C.MCDOWELL DATE 20 February, 2018 SCALE 1 : 200 @ A3	 NORTH ASSEMBLY / DISASSEMBLY SHEET: 01 OF 01 <h1>SO-208</h1>
	REV.	DESCRIPTION	DATE	DRAWN	CHECK										
1	Editing Layout	08/09/18	VP	JR											



NOTES

- CONTAINER 6 REMOVAL
THE TRUCK WILL ARRIVE TO SITE WITHOUT ANY LOAD AND LIFT CONTAINER 6 ONTO THE TRUCK. ONCE SECURED THE TRUCK WILL LEAVE THE SITE.
 - CONTAINER 7 DELIVERY
THE TRUCK WILL BRING CONTAINER 7 TO SITE. THE CRANE WILL LIFT THE CONTAINER OFF THE TRUCK AND PLACE IT IN THE POSITION SHOWN IN THE DRAWING. THE TRUCK WILL LEAVE ONCE UNLOADED.
 - CONTAINER 7 UNPACKING
UPON OPENING CONTAINER 7, PACKED ITEMS WILL FIRST NEED TO BE REMOVED AND STORED AROUND SITE TO POSITIONS INDICATED BEFORE ACCESS TO THE REMAINING ROOF MODULES IS OBTAINED.
 - ROOF ASSEMBLY
THE CRANE WILL REMOVE THE REMAINING ROOF MODULES FROM THE CONTAINER AND PLACE THEM ON SITE. TEAM UOW WILL THEN GUIDE THE MODULES SO THAT THEY ARE PLACED IN THE CORRECT POSITION ON THE HOUSE WALLS. TEAM UOW WILL THEN CONNECT THE ROOF MODULES TO THE WALL PANELS.
 - BIPVT AND ROOF COMPONENT INSTALLATION
ONCE ALL ROOF MODULES HAVE BEEN SECURED, THE CRANE WILL LIFT THE TRACTILE SOLAR PALLETS TO THE ROOF FOR INSTALLATION. TEAM UOW WILL ALSO INSTALL ROOF SHEETING, FLASHINGS AND GUTTERING AT THIS STAGE.
- TEAM UOW TASKS WILL INCLUDE:
 - UNPACK MANUALLY HANDLED BOXES/CRATES FROM CONTAINER 7
 - DISTRIBUTE LARGE ITEMS AROUND SITE
 - ASSEMBLE ROOF
 - WRAP AIR-TIGHT MEMBRANE
 - CONNECT HVAC DUCTS & ELECTRICAL WIRING

LEGEND

- FIRST AID
- FIRE EXTINGUISHER

CONTAINER 7 UNPACKING SCHEDULE

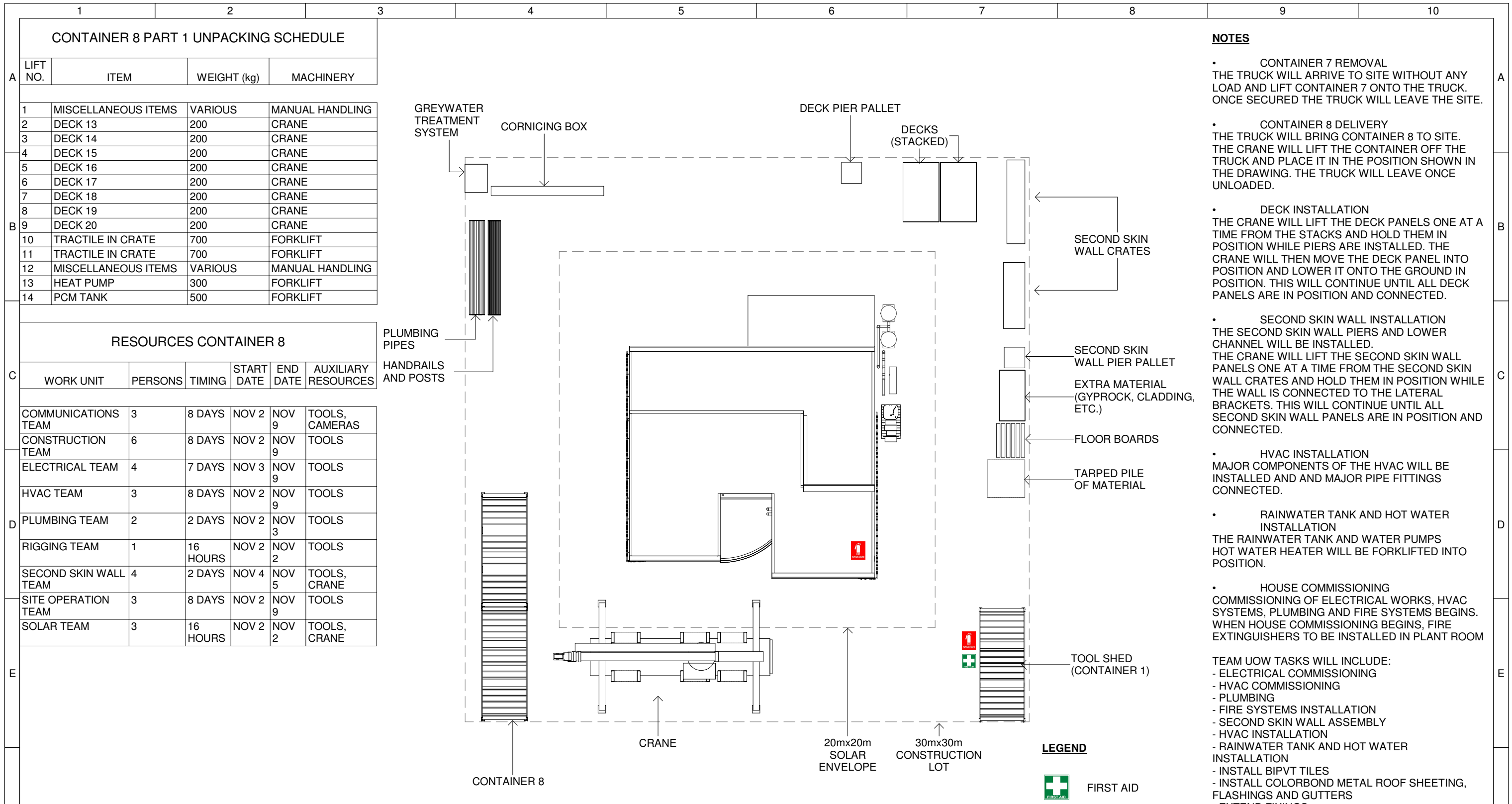
LIFT NO.	ITEM	WEIGHT (kg)	MACHINERY
1	MISCELLANEOUS ITEMS	VARIOUS	MANUAL HANDLING
2	HVAC CAGE WALL	200	CRANE
3	TRUSS 11	500	CRANE
4	TRUSS 12	500	CRANE
5	RAKED CEILING 2	600	CRANE
6	RAKED CEILING 3	350	CRANE
7	TRUSS 5	600	CRANE
8	TRUSS 6	700	CRANE

RESOURCES CONTAINER 7

WORK UNIT	PERSONS	TIMING	START DATE	END DATE	AUXILIARY RESOURCES
ASSEMBLY TEAM	7	16 HOURS	NOV 1	NOV 1	TOOLS
COMMUNICATIONS TEAM	3	16 HOURS	NOV 1	NOV 1	TOOLS, CAMERAS
CONTAINER UNPACKING SYSTEM	6	16 HOURS	NOV 1	NOV 1	TOOLS
RIGGING TEAM	3	16 HOURS	NOV 1	NOV 1	TOOLS
SITE OPERATION TEAM	3	16 HOURS	NOV 1	NOV 1	TOOLS

1 SO - Roof Assembly (Part 3)
1 : 200

	Team: TEAM UOW Address: UNIVERSITY OF WOLLONGONG WOLLONGONG NSW, AUSTRALIA 2522 Contact: sd-2018@uow.edu.au www.desertrosehouse.com.au	Client: Dubai Electricity and Water Authority 	AMENDMENTS <table border="1"> <thead> <tr> <th>REV.</th> <th>DESCRIPTION</th> <th>DATE</th> <th>DRAWN</th> <th>CHECK</th> </tr> </thead> <tbody> <tr> <td>1</td> <td>Updated Detailing, Notes, and Layout</td> <td>15/09/1</td> <td>VP</td> <td>JR</td> </tr> </tbody> </table>	REV.	DESCRIPTION	DATE	DRAWN	CHECK	1	Updated Detailing, Notes, and Layout	15/09/1	VP	JR	COPYRIGHT None; Project is Public DRAWER J.ROTH CHECKED C.MCDOWELL DATE 07 September, 2018 SCALE 1 : 200 @ A3	 ASSEMBLY / DISASSEMBLY SHEET: 01 OF 01 SO-209
	REV.	DESCRIPTION	DATE	DRAWN	CHECK										
1	Updated Detailing, Notes, and Layout	15/09/1	VP	JR											



- NOTES**
- CONTAINER 7 REMOVAL
THE TRUCK WILL ARRIVE TO SITE WITHOUT ANY LOAD AND LIFT CONTAINER 7 ONTO THE TRUCK. ONCE SECURED THE TRUCK WILL LEAVE THE SITE.
 - CONTAINER 8 DELIVERY
THE TRUCK WILL BRING CONTAINER 8 TO SITE. THE CRANE WILL LIFT THE CONTAINER OFF THE TRUCK AND PLACE IT IN THE POSITION SHOWN IN THE DRAWING. THE TRUCK WILL LEAVE ONCE UNLOADED.
 - DECK INSTALLATION
THE CRANE WILL LIFT THE DECK PANELS ONE AT A TIME FROM THE STACKS AND HOLD THEM IN POSITION WHILE PIERS ARE INSTALLED. THE CRANE WILL THEN MOVE THE DECK PANEL INTO POSITION AND LOWER IT ONTO THE GROUND IN POSITION. THIS WILL CONTINUE UNTIL ALL DECK PANELS ARE IN POSITION AND CONNECTED.
 - SECOND SKIN WALL INSTALLATION
THE SECOND SKIN WALL PIERS AND LOWER CHANNEL WILL BE INSTALLED. THE CRANE WILL LIFT THE SECOND SKIN WALL PANELS ONE AT A TIME FROM THE SECOND SKIN WALL CRATES AND HOLD THEM IN POSITION WHILE THE WALL IS CONNECTED TO THE LATERAL BRACKETS. THIS WILL CONTINUE UNTIL ALL SECOND SKIN WALL PANELS ARE IN POSITION AND CONNECTED.
 - HVAC INSTALLATION
MAJOR COMPONENTS OF THE HVAC WILL BE INSTALLED AND MAJOR PIPE FITTINGS CONNECTED.
 - RAINWATER TANK AND HOT WATER INSTALLATION
THE RAINWATER TANK AND WATER PUMPS HOT WATER HEATER WILL BE FORKLIFTED INTO POSITION.
 - HOUSE COMMISSIONING
COMMISSIONING OF ELECTRICAL WORKS, HVAC SYSTEMS, PLUMBING AND FIRE SYSTEMS BEGINS. WHEN HOUSE COMMISSIONING BEGINS, FIRE EXTINGUISHERS TO BE INSTALLED IN PLANT ROOM

CONTAINER 8 PART 1 UNPACKING SCHEDULE

LIFT NO.	ITEM	WEIGHT (kg)	MACHINERY
1	MISCELLANEOUS ITEMS	VARIOUS	MANUAL HANDLING
2	DECK 13	200	CRANE
3	DECK 14	200	CRANE
4	DECK 15	200	CRANE
5	DECK 16	200	CRANE
6	DECK 17	200	CRANE
7	DECK 18	200	CRANE
8	DECK 19	200	CRANE
9	DECK 20	200	CRANE
10	TRACTILE IN CRATE	700	FORKLIFT
11	TRACTILE IN CRATE	700	FORKLIFT
12	MISCELLANEOUS ITEMS	VARIOUS	MANUAL HANDLING
13	HEAT PUMP	300	FORKLIFT
14	PCM TANK	500	FORKLIFT

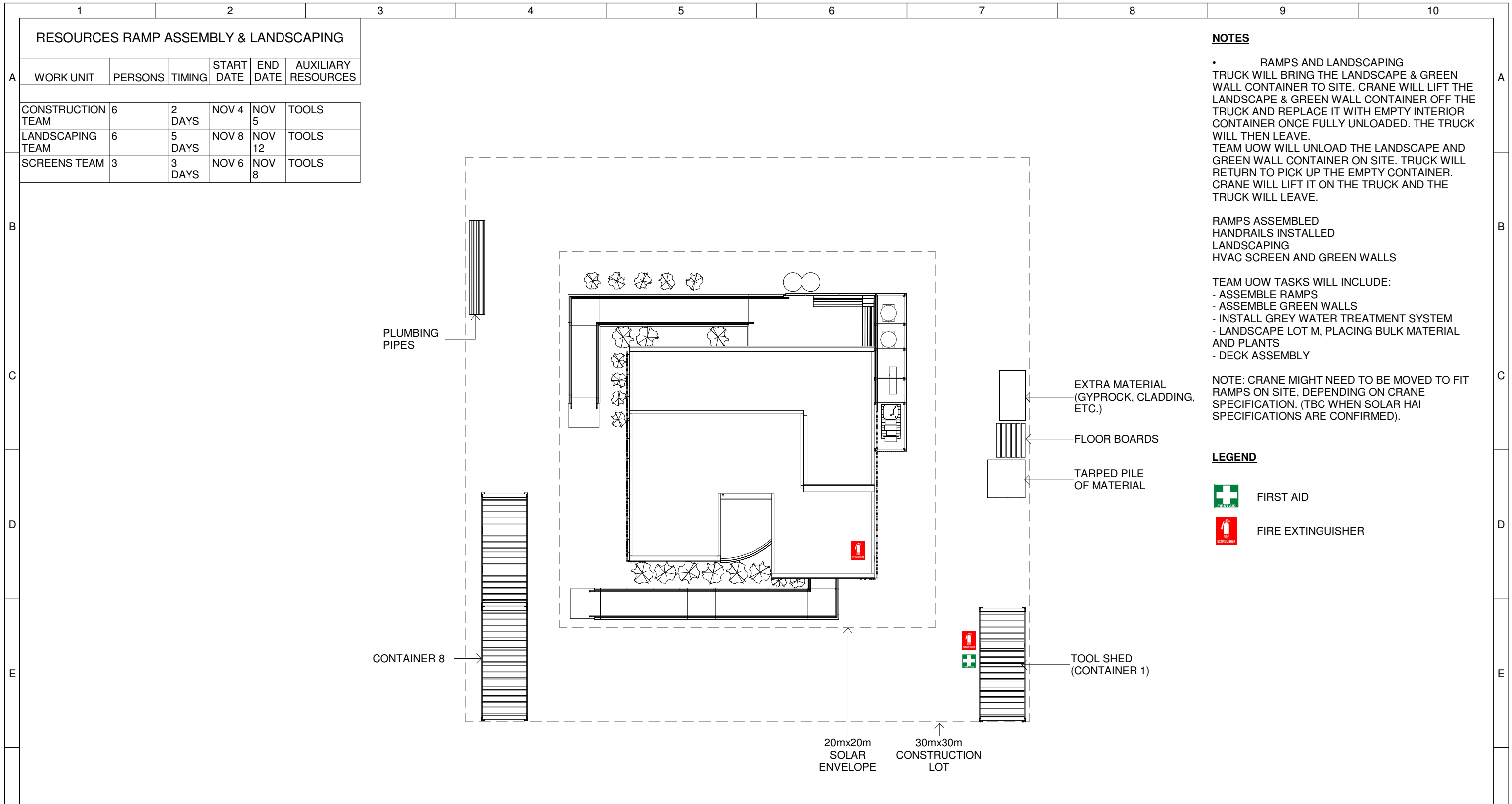
RESOURCES CONTAINER 8

WORK UNIT	PERSONS	TIMING	START DATE	END DATE	AUXILIARY RESOURCES
COMMUNICATIONS TEAM	3	8 DAYS	NOV 2	NOV 9	TOOLS, CAMERAS
CONSTRUCTION TEAM	6	8 DAYS	NOV 2	NOV 9	TOOLS
ELECTRICAL TEAM	4	7 DAYS	NOV 3	NOV 9	TOOLS
HVAC TEAM	3	8 DAYS	NOV 2	NOV 9	TOOLS
PLUMBING TEAM	2	2 DAYS	NOV 2	NOV 3	TOOLS
RIGGING TEAM	1	16 HOURS	NOV 2	NOV 2	TOOLS
SECOND SKIN WALL TEAM	4	2 DAYS	NOV 4	NOV 5	TOOLS, CRANE
SITE OPERATION TEAM	3	8 DAYS	NOV 2	NOV 9	TOOLS
SOLAR TEAM	3	16 HOURS	NOV 2	NOV 2	TOOLS, CRANE

- TEAM UOW TASKS WILL INCLUDE:
- ELECTRICAL COMMISSIONING
 - HVAC COMMISSIONING
 - PLUMBING
 - FIRE SYSTEMS INSTALLATION
 - SECOND SKIN WALL ASSEMBLY
 - HVAC INSTALLATION
 - RAINWATER TANK AND HOT WATER INSTALLATION
 - INSTALL BIPVT TILES
 - INSTALL COLORBOND METAL ROOF SHEETING, FLASHINGS AND GUTTERS
 - EXTEND FIXINGS

1 SO - Major Component Installation and Commissioning
1 : 200

	Team: TEAM UOW Address: UNIVERSITY OF WOLLONGONG WOLLONGONG NSW, AUSTRALIA 2522 Contact: sd-2018@uow.edu.au www.desertrosehouse.com.au	Client: Dubai Electricity and Water Authority 	AMENDMENTS <table border="1"> <thead> <tr> <th>REV.</th> <th>DESCRIPTION</th> <th>DATE</th> <th>DRAWN</th> <th>CHECK</th> </tr> </thead> <tbody> <tr> <td>1</td> <td>Editing Notes</td> <td>08/09/18</td> <td>VP</td> <td>JR</td> </tr> </tbody> </table>	REV.	DESCRIPTION	DATE	DRAWN	CHECK	1	Editing Notes	08/09/18	VP	JR	COPYRIGHT None; Project is Public LOT # M DRAWER J.ROTH CHECKED C.MCDOWELL DATE 07 September, 2018 SCALE 1 : 200 @ A3	 NORTH ASSEMBLY / DISASSEMBLY SHEET: 01 OF 01 SO-210
	REV.	DESCRIPTION	DATE	DRAWN	CHECK										
1	Editing Notes	08/09/18	VP	JR											



NOTES

- RAMPS AND LANDSCAPING TRUCK WILL BRING THE LANDSCAPE & GREEN WALL CONTAINER TO SITE. CRANE WILL LIFT THE LANDSCAPE & GREEN WALL CONTAINER OFF THE TRUCK AND REPLACE IT WITH EMPTY INTERIOR CONTAINER ONCE FULLY UNLOADED. THE TRUCK WILL THEN LEAVE. TEAM UOW WILL UNLOAD THE LANDSCAPE AND GREEN WALL CONTAINER ON SITE. TRUCK WILL RETURN TO PICK UP THE EMPTY CONTAINER. CRANE WILL LIFT IT ON THE TRUCK AND THE TRUCK WILL LEAVE.

RAMPS ASSEMBLED
HANDRAILS INSTALLED
LANDSCAPING
HVAC SCREEN AND GREEN WALLS

TEAM UOW TASKS WILL INCLUDE:
 - ASSEMBLE RAMPS
 - ASSEMBLE GREEN WALLS
 - INSTALL GREY WATER TREATMENT SYSTEM
 - LANDSCAPE LOT M, PLACING BULK MATERIAL AND PLANTS
 - DECK ASSEMBLY

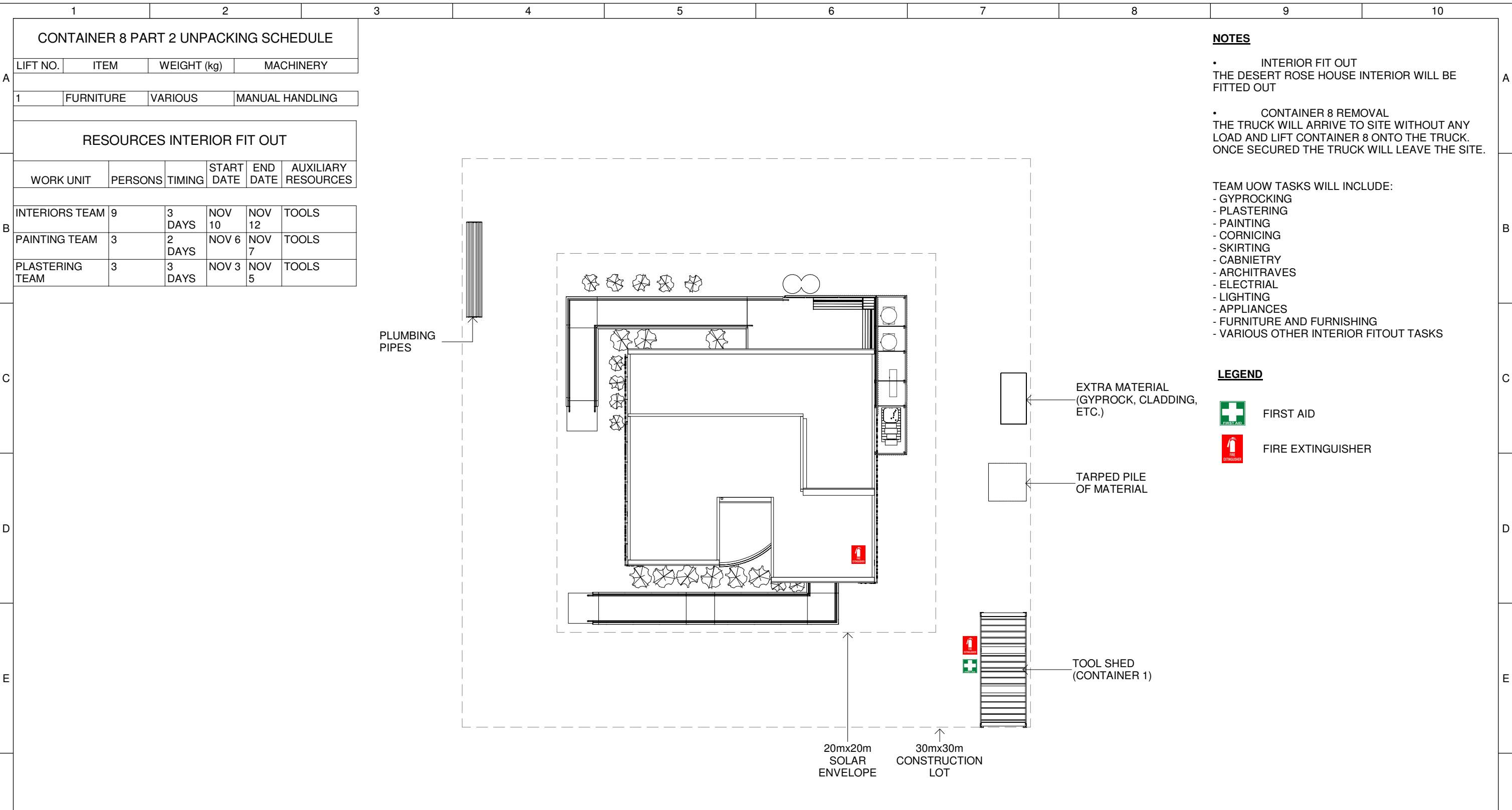
NOTE: CRANE MIGHT NEED TO BE MOVED TO FIT RAMPS ON SITE, DEPENDING ON CRANE SPECIFICATION. (TBC WHEN SOLAR HAI SPECIFICATIONS ARE CONFIRMED).

LEGEND

- FIRST AID
- FIRE EXTINGUISHER

1 SO - Ramp Assembly & Landscaping
1 : 200

	Team: TEAM UOW Address: UNIVERSITY OF WOLLONGONG WOLLONGONG NSW, AUSTRALIA 2522	Client: Dubai Electricity and Water Authority 	AMENDMENTS			COPYRIGHT None; Project is Public			ASSEMBLY / DISASSEMBLY					
	Contact: sd-2018@uow.edu.au www.desertrosehouse.com.au		<table border="1"> <thead> <tr> <th>REV.</th> <th>DESCRIPTION</th> <th>DATE</th> <th>DRAWN</th> <th>CHECK</th> </tr> </thead> <tbody> <tr> <td>1</td> <td>Updated Plans and Detailing</td> <td>08/09/18</td> <td>VP</td> <td>JR</td> </tr> </tbody> </table>	REV.	DESCRIPTION	DATE	DRAWN			CHECK	1	Updated Plans and Detailing	08/09/18	VP
REV.	DESCRIPTION	DATE	DRAWN	CHECK										
1	Updated Plans and Detailing	08/09/18	VP	JR										



NOTES

- INTERIOR FIT OUT
THE DESERT ROSE HOUSE INTERIOR WILL BE FITTED OUT
- CONTAINER 8 REMOVAL
THE TRUCK WILL ARRIVE TO SITE WITHOUT ANY LOAD AND LIFT CONTAINER 8 ONTO THE TRUCK. ONCE SECURED THE TRUCK WILL LEAVE THE SITE.

TEAM UOW TASKS WILL INCLUDE:

- GYPROCKING
- PLASTERING
- PAINTING
- CORNICING
- SKIRTING
- CABINETRY
- ARCHITRAVES
- ELECTRICAL
- LIGHTING
- APPLIANCES
- FURNITURE AND FURNISHING
- VARIOUS OTHER INTERIOR FITOUT TASKS

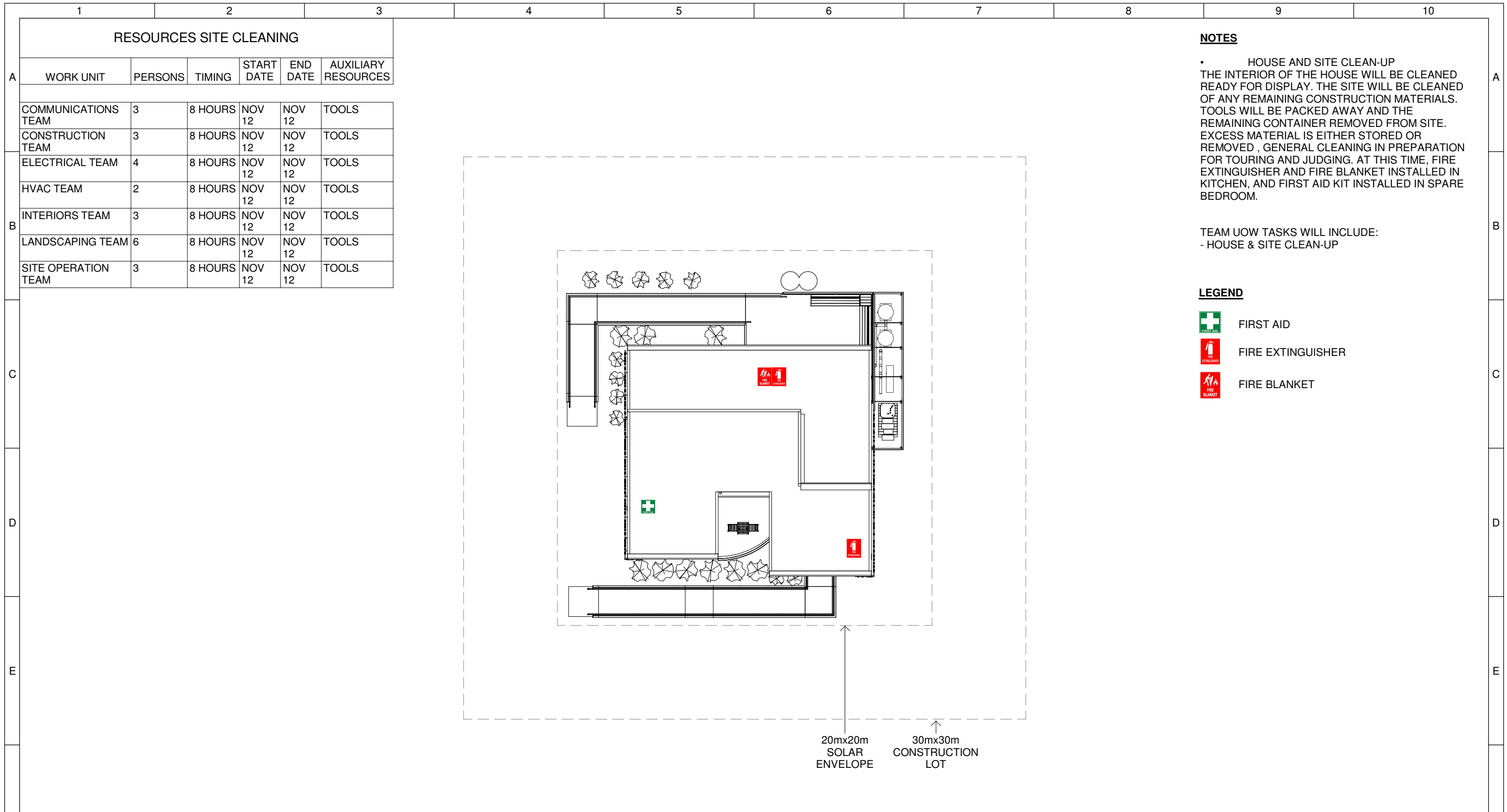
LEGEND

- FIRST AID
- FIRE EXTINGUISHER

CONTAINER 8 PART 2 UNPACKING SCHEDULE					
LIFT NO.	ITEM	WEIGHT (kg)	MACHINERY		
1	FURNITURE	VARIOUS	MANUAL HANDLING		
RESOURCES INTERIOR FIT OUT					
WORK UNIT	PERSONS	TIMING	START DATE	END DATE	AUXILIARY RESOURCES
INTERIORS TEAM	9	3 DAYS	NOV 10	NOV 12	TOOLS
PAINTING TEAM	3	2 DAYS	NOV 6	NOV 7	TOOLS
PLASTERING TEAM	3	3 DAYS	NOV 3	NOV 5	TOOLS

1 SO - Interior Fit Out
1 : 200

	Team: TEAM UOW Address: UNIVERSITY OF WOLLONGONG WOLLONGONG NSW, AUSTRALIA 2522	Client: Dubai Electricity and Water Authority 	AMENDMENTS				COPYRIGHT None; Project is Public			ASSEMBLY / DISASSEMBLY				
	Contact: sd-2018@uow.edu.au www.desertrosehouse.com.au		<table border="1"> <thead> <tr> <th>REV.</th> <th>DESCRIPTION</th> <th>DATE</th> <th>DRAWN</th> <th>CHECK</th> </tr> </thead> <tbody> <tr> <td>1</td> <td>Updated Plans and Detailing</td> <td>08/09/18</td> <td>VP</td> <td>JR</td> </tr> </tbody> </table>	REV.	DESCRIPTION	DATE	DRAWN	CHECK			1	Updated Plans and Detailing	08/09/18	VP
REV.	DESCRIPTION	DATE	DRAWN	CHECK										
1	Updated Plans and Detailing	08/09/18	VP	JR										






NOTES

• HOUSE AND SITE CLEAN-UP
 THE INTERIOR OF THE HOUSE WILL BE CLEANED READY FOR DISPLAY. THE SITE WILL BE CLEANED OF ANY REMAINING CONSTRUCTION MATERIALS. TOOLS WILL BE PACKED AWAY AND THE REMAINING CONTAINER REMOVED FROM SITE. EXCESS MATERIAL IS EITHER STORED OR REMOVED, GENERAL CLEANING IN PREPARATION FOR TOURING AND JUDGING. AT THIS TIME, FIRE EXTINGUISHER AND FIRE BLANKET INSTALLED IN KITCHEN, AND FIRST AID KIT INSTALLED IN SPARE BEDROOM.




TEAM UOW TASKS WILL INCLUDE:
 - HOUSE & SITE CLEAN-UP

LEGEND

-  FIRST AID
-  FIRE EXTINGUISHER
-  FIRE BLANKET

RESOURCES SITE CLEANING					
WORK UNIT	PERSONS	TIMING	START DATE	END DATE	AUXILIARY RESOURCES
COMMUNICATIONS TEAM	3	8 HOURS	NOV 12	NOV 12	TOOLS
CONSTRUCTION TEAM	3	8 HOURS	NOV 12	NOV 12	TOOLS
ELECTRICAL TEAM	4	8 HOURS	NOV 12	NOV 12	TOOLS
HVAC TEAM	2	8 HOURS	NOV 12	NOV 12	TOOLS
INTERIORS TEAM	3	8 HOURS	NOV 12	NOV 12	TOOLS
LANDSCAPING TEAM	6	8 HOURS	NOV 12	NOV 12	TOOLS
SITE OPERATION TEAM	3	8 HOURS	NOV 12	NOV 12	TOOLS

1 SO - Site Cleaning
 1 : 200

 <p>Desert Rose Team UOW Australia - Dubai</p>	Team: TEAM UOW Address: UNIVERSITY OF WOLLONGONG WOLLONGONG NSW, AUSTRALIA 2522 Contact: sd-2018@uow.edu.au www.desertrosehouse.com.au	Client: Dubai Electricity and Water Authority 	AMENDMENTS <table border="1"> <thead> <tr> <th>REV.</th> <th>DESCRIPTION</th> <th>DATE</th> <th>DRAWN</th> <th>CHECK</th> </tr> </thead> <tbody> <tr> <td>1</td> <td>Updated Plans and Detailing</td> <td>08/09/18</td> <td>VP</td> <td>JR</td> </tr> </tbody> </table>	REV.	DESCRIPTION	DATE	DRAWN	CHECK	1	Updated Plans and Detailing	08/09/18	VP	JR	COPYRIGHT None; Project is Public LOT # M DRAWER J.ROTH CHECKED C.MCDOWELL DATE 07 September, 2018 SCALE 1 : 200 @ A3	 <p>NORTH</p>	<p>ASSEMBLY / DISASSEMBLY</p> <p>SO-213</p>
	REV.	DESCRIPTION	DATE	DRAWN	CHECK											
1	Updated Plans and Detailing	08/09/18	VP	JR												
SHEET: 01 OF 01																